

**FISHIN' FUN  
INSTRUCTION  
MANUAL**

## TABLE OF CONTENTS

<b>OBJECT</b>	<b>1</b>
<b>PROGRAMMING</b>	<b>2</b>
<b>FILLING AND DRAINING INSTRUCTIONS</b>	<b>3</b>
<b>ERROR SIGNALS</b>	<b>4</b>
<b>PERIODIC MAINTENANCE</b>	<b>5</b>
<b>TROUBLESHOOTING</b>	<b>6</b>
<b>WARRANTY INFORMATION</b>	<b>7</b>
<b>SCHEMATICS</b>	<b>8-13</b>
<b>TICKET PATTERN</b>	<b>14</b>
<b>TICKET DISPENSER MANUAL</b>	

## GENERAL INFORMATION

### OBJECT

Players try to accumulate as many points as they can in the allotted time by catching fish. To catch a fish the player must press the "cast" button, which lowers the pole to enable the lure to contact the metal protrusion on top of the fish. When contact is made, the player is awarded the point value of the fish that has been caught.

### TEST MODE

For the game to catch fish properly, the bottom of the magnet has to make contact with the fish. Periodically this height should be checked, as the fishing line will grow longer with the stretching caused by continuous use.

This adjustment is easy to make with the use of Dipswitch #8 on the dipswitch bank located on the logic unit.

**Flip #8 up, or ON**

**This will stop the turntable and bring the fishing rod down.**

**As you hold down the CAST button, the fish turntable will rotate.**

**Align a fish under the magnet and adjust the height from behind the game. There is a screw clamp that will loosen the fishing line.**

**Adjust height of magnet so that the tip of the magnet just touches the fish.**

**Hold CAST button to check other fish.**

## PROGRAMMING

There is an eight-pole DIPswitch labeled S1 used to program the games. The switch can be accessed through the cable plate on the logic unit. Removing cables JP5 and JP8 allow easier access to S1.

X = closed or on position

O = open or off position

• = default setting

<u>SWITCH #</u>	<u>TICKET PATTERN</u>	<u>TICKETS/POINTS</u>
<u>1</u> <u>2</u> <u>3</u>		
X   X   X	1	1 TICKET FOR EVERY 50 POINTS
0   X   X	2	2 TICKETS FOR EVERY 50 POINTS
X   0   X	3	3 TICKETS FOR EVERY 50 POINTS
0   0   X	4	4 TICKETS FOR EVERY 50 POINTS
X   X   0	5	• 1 TICKET FOR EVERY 100 POINTS
0   X   0	6	2 TICKETS FOR EVERY 200 POINTS
X   0   0	7	3 TICKETS FOR EVERY 100 POINTS
0   0   0	8	4 TICKETS FOR EVERY 100 POINTS

<u>SWITCH #</u>	<u>1 FREE MERCY TICKET</u>
<u>4</u>	
X	• ENABLED
0	DISABLED

<u>SWITCH #</u>	<u>DIFFICULTY LEVEL</u>
X	• EASY
0	HARD

<u>SWITCH #</u>	<u>COINS PER PLAY</u>
<u>6</u>	
X	2 COINS
0	• 1 COIN

<u>SWITCH #</u>	<u>ATTRACT MODE</u>
<u>7</u>	
X	ON
0	• OFF

<u>SWITCH #</u>	<u>TEST MODE</u>
<u>8</u>	
X	ENABLED
0	• DISABLED

**It is important to drain and refill your bubble panels every three months. It will prevent the panels from getting a cloudy film. Only refill with distilled water.**

### **FILLING INSTRUCTIONS**

- **Unplug unit before filling**
- **Purchase 5 gallons of distilled water**
- **Remove cork from clear overflow tank and insert the supplied funnel (This funnel is to be used for filling this game only to prevent any foreign substances from entering bubble panels)**
- **Start filling overflow tank**
- **Pay close attention to the water height in the clear overflow tank**
- **Stay 1" below the upper fittings. The game will take about an hour to fill all three water panels and you will need to add distilled water to the overflow tank every several minutes.**

### **DRAINING INSTRUCTIONS**

- **Unplug unit before draining**
- **Remove dome nuts from the tee in the hose below the bubble panel and above the check valve and drain into a pail**
- **Do not reuse old water**
- **Replace dome nut and refer to filling instructions.**

## **ERROR SIGNALS**

- A display of “Lo” signals that tickets are low or empty. Refill as needed.
- **ERR 1 – Fishing Pole Error** –The opto board is not sensing movement of Fishing pole motor. Check the following items:  
Fishing pole motor, motor fuse, opto board.
- **ERR-2 – Turntable Error**    The opto board is not sensing movement of Turntable motor check the following items:  
turntable motor, motor fuse, opto board

## PERIODIC MAINTENANCE

A clean, well-maintained game will attract more players, operate more efficiently and in turn, generate more revenue. The following is a short list of general maintenance and cleaning information. We recommend you follow these procedures on a regular basis.

### Daily Basis:

- Check water level in bubble panels and overflow tank
- Inspect lighting for non-working lamps
- Fill ticket tray to capacity

### Weekly Basis:

- Clean the windows with a soft cloth and glass cleaner
- Fish should stay clean, if fish come in contact with magnet or lure, they will start to turn gray

### Quarterly Basis:

- Replace water in game with fresh distilled water. **THIS IS IMPORTANT.** If this is not done the water panels will become cloudy and diminish the floor appeal of the game.
- Vacuum turntable to remove dust and debris. Do not wipe turntable with anything, e.g., cloth, or paper toweling, as wiping will scratch the surface
- Check cable adjustment on fishing pole. The top of the metal fish protrusion should be at the same height as the upper part of the cap on the bottom of the magnet.

## TROUBLESHOOTING

Following is a list of malfunctions that may occur with your game. If you should experience a malfunction, follow the solutions in the order they are listed. If you have a malfunctioning logic unit, please have the serial number of the game and call Bay Tek Service Department at 920-822-3951 for prompt shipment of an advanced replacement logic unit.

### Game Appears To Be Difficult To Play Or Score:

- The tip of the fishing pole should be 4" away from the ceiling of the game
- Check cable adjustment on fishing pole. The top of the metal fish protrusion should be at the same height as the upper part of the cap on the bottom of the magnet

### Game Has No Functions:

- Ensure proper connection to power outlet
- Check for voltage at outlet
- Replace fuse with 2-amp fuse only. Fuse is located inside power switch and can be accessed by pushing switch in and rotating counter-clockwise, 1/8 turn

### No Audio:

- Turn volume control knob back and forth a few times.
- Check connections at JP2.
- Check connections at speaker terminal.
- Replace the logic unit with logic unit from a working Bay Tek game to isolate the problem logic unit.
- 

### Tickets Do Not Dispense:

- Check connections between ticket dispenser and main cable harness
- Check connections at JP3 on logic unit
- Replace the logic unit with logic unit from a working Bay Tek game to isolate the problem to the logic unit.

### Game Dispenses Wrong Amount of Tickets:

- Clean opto-electronic beam breaker sensor located on the ticket dispenser circuit board. To clean, simply blow on sensor to get most of the debris out and finish with Isopropyl alcohol and a cotton swab.
- Check for correct dipswitch settings.
- Replace the ticket dispenser with a ticket dispenser from a working game to isolate the problem to the ticket dispenser.
- Replace the logic unit with a logic unit from a working Bay Tek game to isolate the problem to the logic unit.

## WARRANTY INFORMATION

Bay-Tek, Inc. warrants to the original purchaser that the game will be free of defects in workmanship and materials for a period of six months from the date of installation.

Bay-Tek, Inc. will without charge, repair or replace, at its option, defective product or component parts upon notification to the factory service department. Serial number identification will be required for warranty consideration. Warranty replacement part(s) will be shipped immediately via ground service, along with an RMA number for the return of the defective part(s). Defective parts must be shipped back to Bay-Tek, Inc. unless otherwise instructed.

*This warranty does not apply in the event of any misuse or abuse of the product, or as a result of any unauthorized repairs or alterations. This warranty does not apply if the serial number is altered, defaced or removed from its original position.*

Should your game need servicing, determine the serial number from the logic unit of the game, and call 920-822-3951 or email [service@bay-tek.com](mailto:service@bay-tek.com)

## REPAIR OF NON-WARRANTY UNITS

Should your game need servicing, determine the serial number from the logic, and call 920-822-3951 or email [service@bay-tek.com](mailto:service@bay-tek.com). An estimate of repair charges will be quoted to you for approval.

Proceed in one of the two following ways:

1. Request immediate shipment of advanced replacement parts.
2. Send in the defective unit for repair and return.

If advanced replacement(s) are requested, you will receive with your parts an RMA number for the return of the faulty part(s). You must return defective parts within 14 days to avoid additional charges.

Should you choose to return for repair include the following:

- a. Name, address and phone number including area code.
- b. Game serial information
- c. A purchase order number, work order number or signed authorization to perform service.

Repair and Return parts will be shipped back using the same mode of transportation under which they were received. Repairs are warranted for a period of thirty (30) days from the date installed into service.

## Fish N Fun Water Panel Cleaning Procedure

To keep your water panels looking crystal clear, please follow the cleaning procedure listed here.

### **CAUTION –**

**DO NOT USE BLEACH**, or any other chemical to clean the inside of the water panels. Bay-Tek, Inc. provides a cleaner and water treatment solution, specifically designed for these panels.

### Disconnect Power From Game Prior To Cleaning Water Panels

- 1) Drain all the water from the panels.
- 2) Chemical Cleaner (CC-SCALE AWAY) will need to be diluted prior to being introduced into the game. Pouring chemical cleaner directly into the overflow tank could cause both the overflow bucket and water panels to leak.
- 3) Mix chemical cleaner with 3 gallons of distilled water in a five-gallon bucket. Slowly pour this solution into the overflow tank. Continue to fill overflow tank until all three panels are full, being careful not to overflow the overflow tank.
- 4) Reconnect power to the game and turn on the air pumps and allow this solution to work itself around in the panels for 3 hours. **Do Not Leave Chemical Cleaner In Panels For More Than Three Hours!**
- 5) Disconnect power and drain all water and chemical cleaning solution from game.
- 6) Fill game once again, this time with clear, clean distilled water and turn on the air pumps again for about 15 minutes. Drain water panels one more time. (This step assures that the panels have been rinsed completely clean of CC-SCALE AWAY.
- 7) You are now ready to fill the game for the final time. At this point, you will introduce the Water Treatment Chemical (CC-50) to the water panels. Again, to allow for even distribution to each panel, please pre-mix chemicals and three gallons of distilled water prior to pouring it in the overflow tank.
- 8) Continue to fill until all the panels are full to the recommended fill level. Replace rubber stopper in the overflow tank and reconnect power to the game. Your cleaning procedure has now been completed and should not have to be repeated for another sixty to ninety days, or at first sign of debris.

Please note that the chemical cleaner and water treatment will continue to work over the course of several days. In some cases it could take up to a week to remove all the debris from each panel, especially if they were extremely dirty. If you do not see a marked improvement you may have to repeat the cleaning procedure. Should you notice a lot of foam after cleaning the water panels, it is caused from CC-SCALE AWAY and you will need to rinse out the panels again. Simple repeat steps 6 through 8.

## ***- Fish N Fun - Water Panel Maintenance***

Congratulations on the purchase of your new Fish N Fun game. This game has features three bubble panels that have been designed exclusively for this game. Given the proper attention, these water panels will keep your game looking great for years to come. Please read the following precautions and maintenance schedules to prevent any potential problems.

### **Precautions:**

When cleaning the game, restocking tickets or draining the water panels, avoid bending or jarring the copper tubes protruding from water panels. Excessive and unnecessary movement could cause a water panel to leak and would need to be replaced.

### **Maintenance:**

There is a few, simple maintenance procedures that should be followed to assure that the water panels stay clean and clear for years to come. Keep in mind that these panels are a sealed unit and cannot be opened or taken apart.

- 1) If possible, position your game so it is not in direct sunlight for extended periods of time. Direct sunlight could accelerate the growth of algae.
- 2) When filling or changing water, use ONLY distilled water.
- 3) Included with your game is a one-gallon jug of water treatment. This treatment has been designed exclusively for Bay-Tek for use in the Fish N Fun game. One gallon of water treatment should be added with each and every water change including initial fill when setting up your game for the first time. This product has been designed to retard the growth of bacteria and neutralize the water within the panels to help maintain a clean environment within the bubble panel.
- 4) Water should be changed every 3 months or sooner if signs of algae begin to appear on the inside of the panels. When changing the water make sure to replace with distilled water and add one full gallon of water treatment.
- 5) If you should notice a cloudy look to your bubble panels and a complete water change does not improve the situation, a chemical cleaner is available from Bay-Tek, Inc which will clean and dissolve the growth within the panels. When used properly, this cleaning procedure will give the bubble panels a fresh, clean appearance.

Please see the following pages explaining the complete cleaning procedure and how to order water treatment and cleaning chemicals for the bubble panels included with your Fish N Fun game.



1077 EAST GLENBROOK DRIVE  
PULASKI, WI 54162  
PHONE: (920) 822-3951  
FAX: (920) 822-8936

## **Fish N Fun**

### ***Water Cleaner Treatment***

### ***Water Conditioning Maintenance***

*Bay-Tek, Inc has recently introduced a two-part procedure for cleaning the glass bubble panels on your Fish N Fun game. The Water Cleaner Treatment will clear the glass panels of any existing debris while the Water Conditioner will maintain a clean environment for the water and bubble panels. Listed are part number, descriptions and pricing information for the chemicals necessary to keep your Fish N Fun game looking its best.*

### **Water Cleaner Treatment**

*Designed to shock, or clean bubble panels with a existing cloudy water or debris problem. Water Cleaner Treatment should be used once a year, or as often as necessary.*

*Part Number: A5CC1001*

*Price Per Treatment: \$20.00*

*(1 gallon = 1 treatment)*

### **Water Conditioner Maintenance**

*Designed to keep water and bubble panels clean and free from build up. Can be used to maintain a clean system, or used to keep system clean after using the Water Cleaner Treatment. Should be added to water every three months, or whenever water is changed.*

*Part Number: A5WT1001*

*Price Per Treatment: \$25.00*

*(1 gallon = 1 treatment)*

*1 Year Supply of Water Conditioner Maintenance (4 gallons)*

*\$80.00*

**1 50**

**2 50**

**3 50**

**4 50**

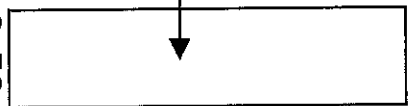
**1 100**

**2 100**

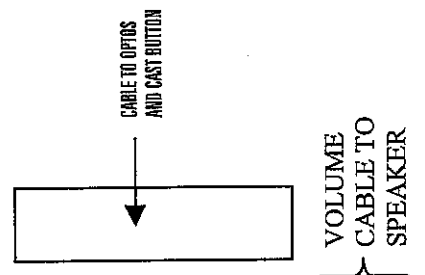
**3 100**

**4 100**

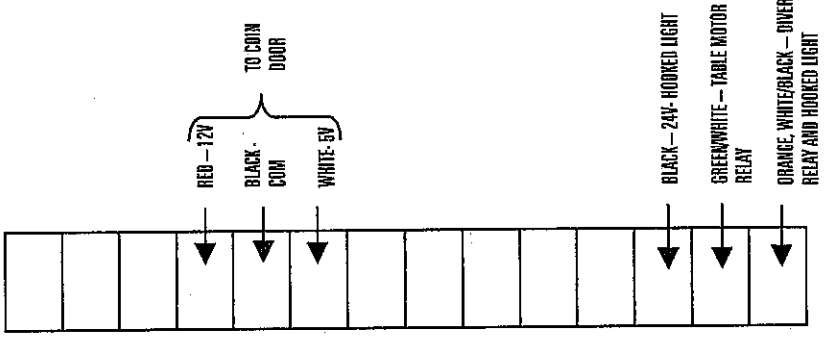
JP 8



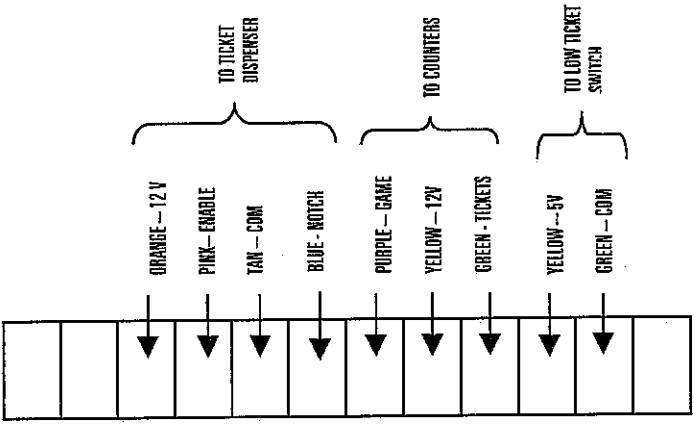
JP 5



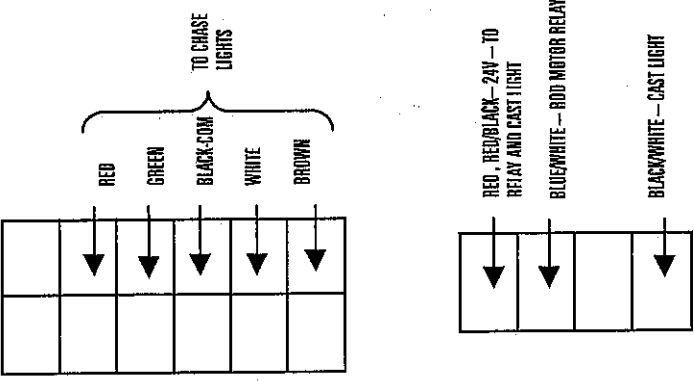
JP 4



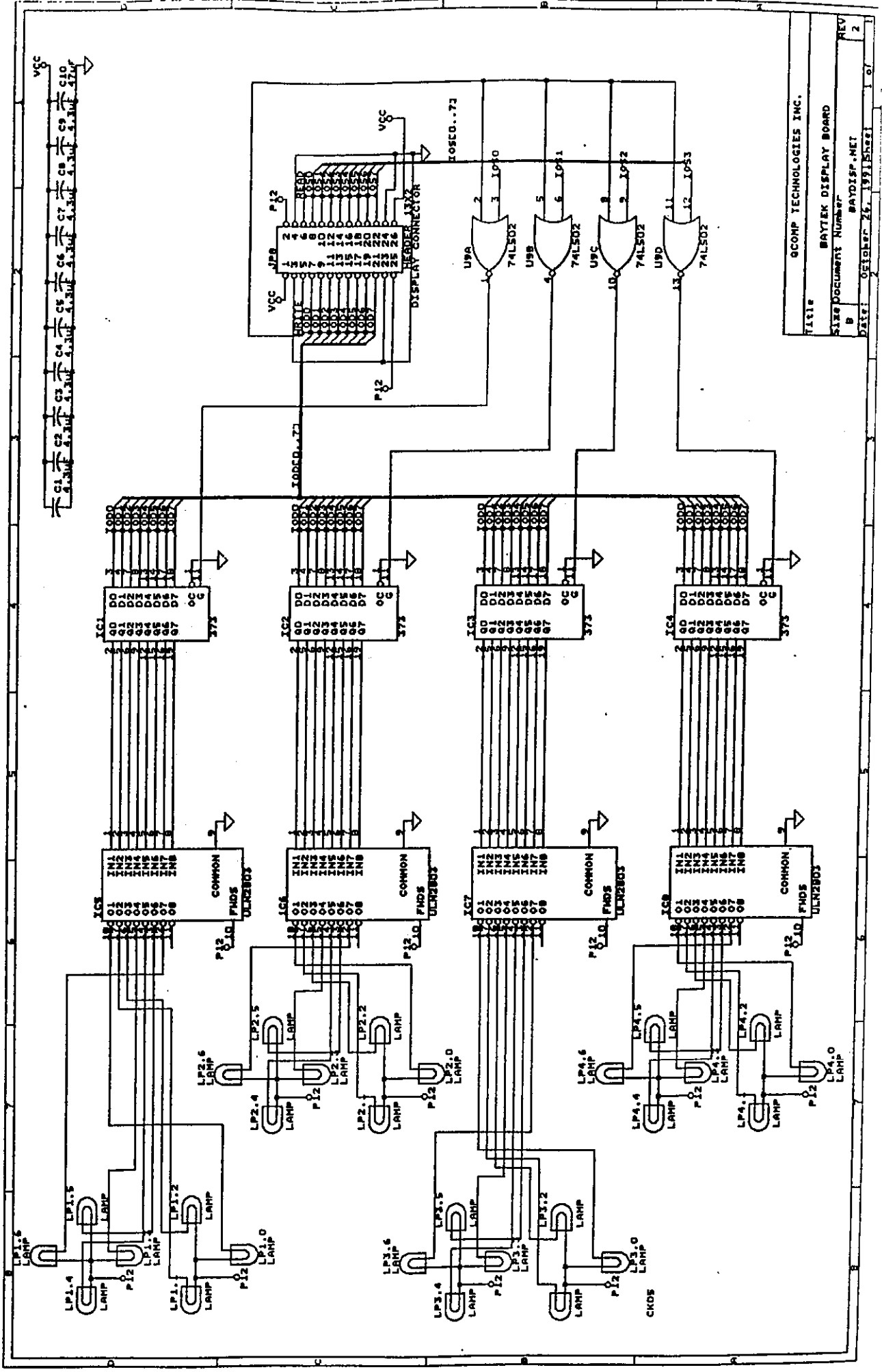
JP 3

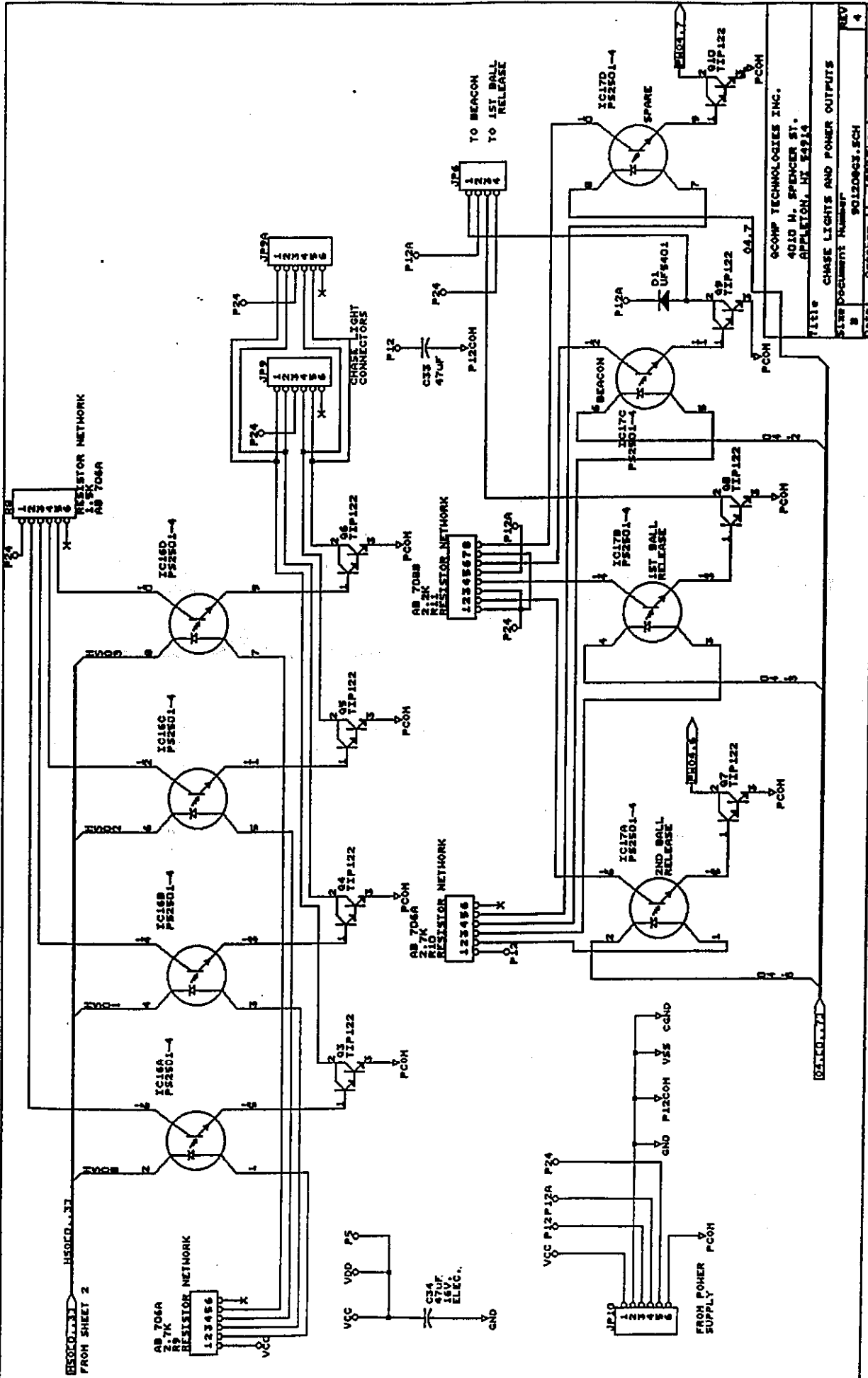


JP 9 - 9A



# FISH N FUN PIN OUT





5550-331 FROM SHEET 2

AB 708A  
2.7K  
RESISTOR NETWORK  
1 2 3 4 5 6 7 8

VCC VDD P5  
C34  
47µF  
16V  
ELEC.  
GND

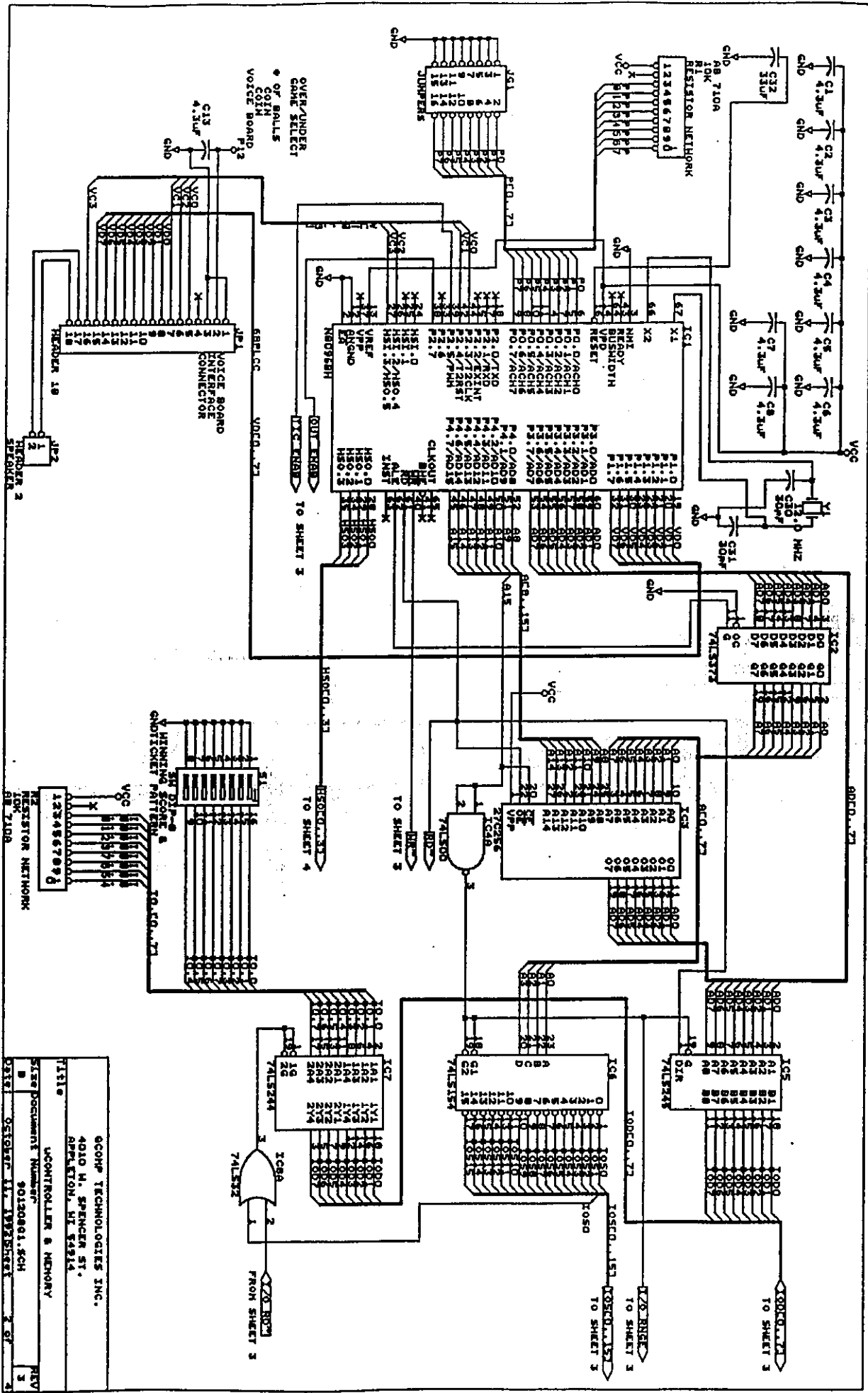
VCC P12P12A P24  
GND P12COM VSS CND  
FROM POWER SUPPLY PCON

5550-331

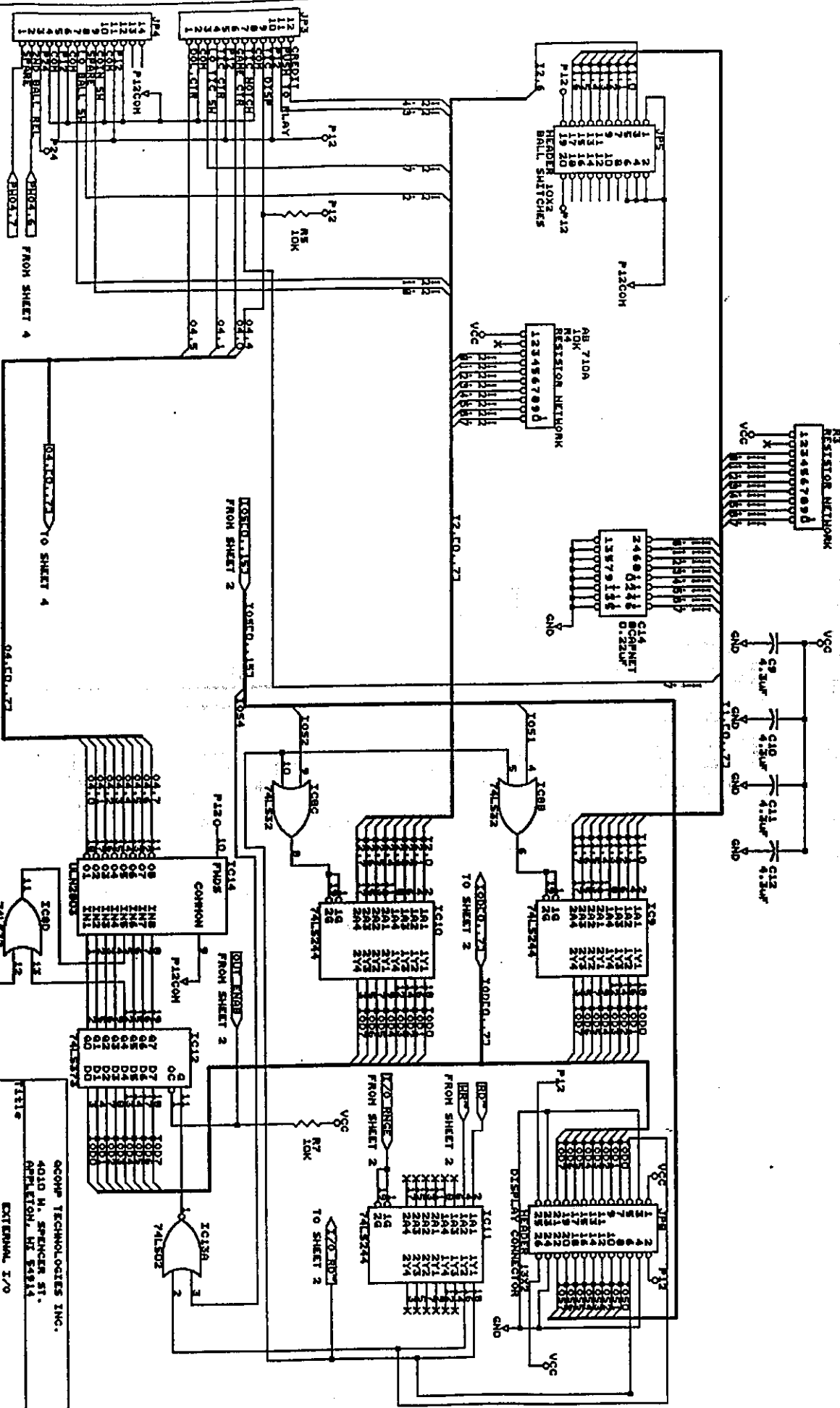
COMP TECHNOLOGIES INC.  
4010 N. SPENCER ST.  
ARLINGTON, VA 22214  
TITLE CHASE LIGHTS AND POWER OUTPUTS  
SIZE DOCUMENT NUMBER 8 50120023.ECH  
REV 4  
DATE OCTOBER 11, 1992 SHEET 3 OF 4







GOMP TECHNOLOGIES INC.  
 4040 N. SPENCER ST.  
 APTERTON, VT 05214  
 TITLE: CONTROLLER & MEMORY  
 SIZE: Document Number: 90120061.SCH  
 DATE: 05/19/81 11:17 AM  
 REV: 3



QCOM TECHNOLOGIES INC.  
 4010 N. SPENCER ST.  
 OREM, UT 84057

TITLE: EXTERNAL I/O  
 SIZE: 10.000 X 8.000 X .005  
 DATE: 12/15/83

REV: 3



1077 EAST GLENBROOK DRIVE  
PULASKI, WI 54162  
PHONE: (920) 822-3951  
FAX: (920) 822-8936

## **Fish N Fun**

### ***Water Cleaner Treatment Water Conditioning Maintenance***

*Bay-Tek, Inc has recently introduced a two-part procedure for cleaning the glass bubble panels on your Fish N Fun game. The Water Cleaner Treatment will clear the glass panels of any existing debris while the Water Conditioner will maintain a clean environment for the water and bubble panels. Listed are part number, descriptions and pricing information for the chemicals necessary to keep your Fish N Fun game looking its best.*

#### **Water Cleaner Treatment**

*Designed to shock, or clean bubble panels with a existing cloudy water or debris problem. Water Cleaner Treatment should be used once a year, or as often as necessary.*

*Part Number: A5CC1001*

*Price Per Treatment: \$20.00*

*(1 gallon = 1 treatment)*

#### **Water Conditioner Maintenance**

*Designed to keep water and bubble panels clean and free from build up. Can be used to maintain a clean system, or used to keep system clean after using the Water Cleaner Treatment. Should be added to water every three months, or whenever water is changed.*

*Part Number: A5WT1001*

*Price Per Treatment: \$25.00*

*(1 gallon = 1 treatment)*

*1 Year Supply of Water Conditioner Maintenance (4 gallons)*

*\$80.00*



*1077 East Glenbrook Drive  
Pulaski, WI 54162  
Phone: (920) 822-3951  
Fax: (920) 822-8937  
e-mail: [mw@bay-tek.com](mailto:mw@bay-tek.com)*

**Following are step by step in instructions that need to be followed to assure proper water panel cleaning. If you have any questions please call Bay-Tek, inc. Service Department before proceeding! Our Service Department is open Monday–Friday from 7:30 a.m.– 5:00 p.m. CST.**

**PLEASE NOTE THE FOLLOWING**

**Allow yourself enough time to complete the entire procedure on the following pages. This cleaning procedure is a two part process and your water panels will need to be drained completely twice.**

**DO NOT leave water treatment chemical (CC-SCALE AWAY) in water panels any longer than stated in instructions.**

**ONLY use distilled water in your Fish N' Fun water panels.**

**Make sure game is turned off and air pumps are not running prior to draining of water panels.**

**Use caution and read all MSDS when working with chemicals.**

**Please call Bay-Tek, inc with any questions regarding this procedure. Our Service Department will be happy to walk you though this procedure or answer any question you may have.**

Chemical Cleaner (ASCC1001)  
CC - SCALE AWAY

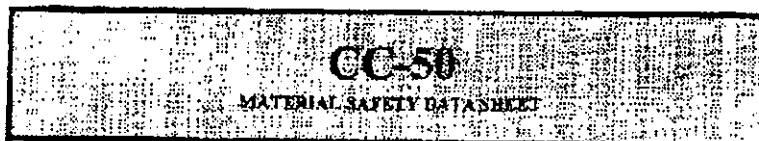
## FISH N FUN TANK CLEANING PROCEDURE

If you have any questions or need any supplies please call BAY-TEK, inc. at 920-822-3951

\*\*\*always wear safety glasses and read MSDS when working with chemicals\*\*\*

1. Move game to a location where floor will not be affected by cleaning chemicals, drain all tanks and close valves
2. Pour half of a gallon of fresh distilled water into overflow tank
3. Pour the cleaner into the half empty gallon and fill the gallon jug up the rest of the way with fresh distilled water (this allows the chemical to get diluted and even out the mix as the liquids enter the water panels at different rates)
4. Pour this full mixed gallon onto the overflow tank but be careful not to overflow the overflow tank
5. After all of the mixed gallon is in the game, fill the rest of the way with fresh distilled water
6. Allow the air pumps to operate for 3 hours and then drain the game
7. Fill the game with fresh distilled water and run for a couple of minutes and then drain completely again





### **Section I - Identification**

Manufacturer's Name	<b>Clearwater Technologies, Inc.</b>
Manufacturer's Address	18 Washington St. Suite 205, Canton, Ma. 02021
Manufacturer's Phone Number	1-508-699-3822
Emergency Phone Number	CHEMTREC - (800) 424-9300
Product Information	Call Clearwater Technologies, Inc. at 1-508-699-3822
Effective Date	6/3/99
Chemical Name	CC-50
DOT Shipping Description	Compound Cleaning, Not Regulated
Chemical Family	Cleaning compound
Chemical Comment	This product does not have any chemicals reportable under Section 313 of Title III of SARA.
Chemical Formula	Mixture of alkali and wetting agents.

### **Section II - Hazardous Ingredients**

<u>Hazardous Components</u>	<u>CAS Number</u>	<u>Hazardous %</u>	<u>TLV (Units)</u>
None		0%	None

### **Section III - Physical Data**

Boiling Point (°F)	N/A
Volatility/VOL (%)	<97.0
Melting Point (°F)	32
Vapor Pressure (mm Hg)	N/A
Vapor Density (Air = 1)	N/A
Solubility In H <sub>2</sub> O	Complete
Appearance/Odor	Clear liquid
Specific Gravity (H <sub>2</sub> O = 1)	1.03
Evaporation Rate	N/A
pH	9

### **Section IV - Fire & Explosion Hazard Data**

Flash Point (°F)	Non-flammable
Lower Flame Limit	N/A
Higher Flame Limit	N/A

Extinguish Media	Use water spray, chemical foam, carbon dioxide, or dry chemical.
Special Fire Fighting Procedures	Use extinguishing media applicable to primary source of fire.
Unusual Fire Hazard	None

### ***Section V - Health Hazard Data***

Routes of Entry	Ingestion
Health Hazards	Irritation
NTP	No
IARC Monographs	No
OSHA Regulated	No
Threshold Limit Value	Not established for this product - see Section II for TLV of hazardous ingredients.

#### **Over Exposure Effects**

Eye Contact: Burning or irritation of eyes.

Skin Contact: No effects of exposure expected due to contact. Product may cause irritation or dermatitis in some individuals upon prolonged contact.

Inhalation: If misted, products may cause irritation of mucous membranes of the nose, eyes or throat and coughing or difficulty in breathing.

Ingestion: Irritation to mouth, nose and throat. Nausea and discomfort.

#### **First Aid**

Eye Contact: Flush immediately with plenty of water for at least 15 minutes and get medical attention.

Skin Contact: Wash thoroughly with soap and water. Seek medical attention if irritation persists.

Ingestion: Get medical attention immediately. Give large quantities of water or milk. Never give anything by mouth to an unconscious person. Do not induce vomiting!

Inhalation: Remove to fresh air, for breathing difficulty, give oxygen or artificial respiration.

### ***Section VI - Reactivity Data***

Chemical Stability	Stable
Conditions To Avoid	Avoid handling conditions which may allow for leaks and spills of this material. Do not permit personnel to handle this product without proper training and/or protective equipment.
Incompatible Materials	Strong oxidizers, reducing agents, and amines
Decomposition Products	From thermal reaction carbon dioxide and carbon monoxide.

---

Hazardous Polymerization	Will not occur.
Polymerization Avoid	Not applicable

---

**Section VII - Spill Or Leak Procedure**

---

For Spill	Absorb with inert material and dispose of in accordance with applicable regulations.
Waste Disposal Method	Dispose of in accordance with local, state and federal regulations.

---

**Section VIII - Special Protection**

---

Respiratory Protection	If used in applications where a mist may be generated.
Ventilation	Recommended
Protective Gloves	Rubber gloves
Eye Protection	Safety glasses
Other Protection	As needed

---

**Section IX - Special Precautions**

---

Label Summary	HMIS
Health Hazard	1
Flammability	1
Reactivity	0
Personal Protection	B

Handling & Storage	Keep out of reach from children. For industrial or institutional use only. Keep from freezing.
--------------------	--



### Section I - Identification

Manufacturer's Name	Clearwater Technologies, Inc.
Manufacturer's Address	18 Washington St. Suite 205, Canton, Ma. 02021
Manufacturer's Phone Number	1-508-699-3822
Emergency Phone Number	CHEMTREC - (800) 424-9300
Product information	Call Clearwater Technologies, Inc. at 1-508-699-3822
Effective Date	12/1/99
Chemical Name	CC-SCALE AWAY
DOT Shipping Description	Compounds, Cleaning Liquid, (Phosphoric Acid), 8, NA 1760, III
Chemical Family	Acidic cleaning compound
Chemical Comment	Phosphoric acid is reportable under Section 313 of Title III of SARA.
Chemical Formula	Mixture of phosphoric acid and wetting agents.

### Section II - Hazardous Ingredients

<u>Hazardous Components</u>	<u>CAS Number</u>	<u>Hazardous %</u>	<u>TLV (Units)</u>
Phosphoric acid	7664-38-2	10.0-20.0%	1 mg/m3

### Section III - Physical Data

Boiling Point (°F)	212
Volatility/VOL (%)	<85.0
Melting Point (°F)	32
Vapor Pressure (mm Hg)	N/A
Vapor Density (Air = 1)	N/A
Solubility In H <sub>2</sub> O	Complete
Appearance/Odor	Blue liquid
Specific Gravity (H <sub>2</sub> O = 1)	1.1953
Evaporation Rate	N/A
pH	2.0 @ 1% solution

### Section IV - Fire & Explosion Hazard Data

Flash Point (°F)	Non-flammable
Lower Flame Limit	N/A
Higher Flame Limit	N/A

Clearwater Technologies, Inc.	CC-SCALE AWAY
Extinguish Media	Use water spray, chemical foam, carbon dioxide, or dry chemical.
Special Fire Fighting Procedures	Use extinguishing media applicable to primary source of fire.
Unusual Fire Hazard	None

#### **Section V - Health Hazard Data**

Routes of Entry	Ingestion, skin
Health Hazards	Burns
NTP	No
IARC Monographs	No
OSHA Regulated	No
Threshold Limit Value	Not established for this product - see Section II for TLV of hazardous ingredients.

#### **Over Exposure Effects**

**Eye Contact:** This product is destructive to eye tissues on contact and will cause severe burns that result in damage to the eyes and possibly blindness.

**Skin Contact:** Product is destructive to tissues contacted and produces severe burns.

**Inhalation:** Airborne concentrations of dusts, mists or spray can cause damage to the upper respiratory tract and lung tissue proper which could produce chemical pneumonia depending upon severity of exposure.

**Ingestion:** This product can cause severe burns and complete tissue perforation of mucous membranes of the mouth, throat, esophagus and stomach.

#### **First Aid**

**Eye Contact:** Flush immediately with plenty of water for at least 15 minutes and get medical attention.

**Skin Contact:** Wash thoroughly with soap and water. Discard contaminated clothing and footwear. Seek medical attention if irritation persists.

**Ingestion:** Give large quantities of water or milk. Never give anything by mouth to an unconscious person. **DO NOT INDUCE VOMITING!** Obtain emergency medical attention immediately.

**Inhalation:** Remove person to fresh air. For breathing difficulty, give oxygen or artificial respiration.

#### **Section VI - Reactivity Data**

Chemical Stability	Stable
Conditions To Avoid	Avoid handling conditions which may allow for leaks and spills of this material. Do not permit personnel to handle this product without proper training and/or protective equipment.

Clearwater Technologies, Inc.

CC-SCALE AWAY

Incompatible Materials

Avoid contact with alkalis and chlorine products.  
 Avoid contact with materials such as aluminum, tin,  
 zinc, and alloys containing these materials.

Decomposition Products

Carbon monoxide and carbon dioxide from high  
 thermal decomposition.

Hazardous Polymerization

Will not occur.

Polymerization Avoid

Not applicable

---

**Section VII - Spill Or Leak Procedure**


---

For Spill

Absorb with inert material and dispose of in  
 accordance with applicable regulations.

Waste Disposal Method

Follow proper procedures for acidic materials at your  
 local disposal facility.

---

**Section VIII - Special Protection**


---

Respiratory Protection

Use a NIOSH/OSHA approved mask when spray mist  
 is present and/or the TLV has been exceeded.

Ventilation

Recommended to keep below TLV.

Protective Gloves

Rubber gloves

Eye Protection

Chemical goggles or splash shield.

Other Protection

Rubber or plastic aprons and boots are  
 recommended.

---

**Section IX - Special Precautions**


---

Label Summary

HMIS

Health Hazard

3

Flammability

0

Reactivity

0

Personal Protection

D

Handling &amp; Storage

Keep out of reach from children. For industrial or  
 institutional use only. Keep from freezing.