

BED MONSTERS



**Be
Sure to Read
this Manual
before Use**

Operation Manual

For Parts and Service, call Bromley-Inc.

www.bromley-inc.com

Tel: 847-427-0639



CONTENT

Important Safety Instructions	2
1. SPECIFICATIONS	4
2. PACKAGE CONTENTS	5
3. SET UP & INSTALLATION	6
3.1 Play Zone	6
3.2 Level Adjustment.....	7
3.3 Transporting the Game	7
3.4 Connecting Power.....	8
4. HOW TO PLAY	9
5. GAME OPTIONS	10
5.1 DIP settings	11
5.1.1 Insert Coins	11
5.1.2 Game Time	11
5.1.3 Payout(score per ticket)	11
5.1.4 DEMO Music.....	11
5.1.5 BONUS Initial Value.....	12
5.1.6 BONUS Increment	12
5.1.7 Mercy Ticket.....	12
5.1.8 BONUS Score	12
5.1.9 New Jersey Setting.....	12
5.1.10 New Jersey Setting Ticket Payout	13
6. MAINTENANCE & INSPECTION	14
6.1 Safety Check	14
6.2 Handling Precautions.....	14
7. OVERALL CONSTRUCTION	15
7-1. Main Construction	16
7-2. Water Gun Assembly.....	17
7-3. Pump Assembly	18
7-4. Character Assembly	20
7-5. Main Cabinet Assembly A.....	21
7-6. Main Cabinet Assembly B.....	22
7-7. Electrical Components	25
7-8. Decals	28
8. TROUBLESHOOTING.....	31
8-1 Trouble Shooting.....	31
8-2 Error Codes	31
9. WIRING DIAGRAM.....	32

This manual contains valuable information about how to operate and maintain your game machine properly and safely. It is intended for the owner and/or personnel in charge of product operation. Carefully read and understand the instructions.

If you need any help during installation and setup please utilize this manual and troubleshooting guide. If the product fails to function properly, *non-technical personnel should under no circumstance attempt to service the machine*. Contact your distributor or manufacturer for help.

Before use, please read **IMPORTANT SAFETY INSTRUCTIONS**.

IMPORTANT SAFETY INSTRUCTIONS

To ensure the safe usage of this product, carefully read and understand these instructions before operating your game. Save these instructions for future reference.

Use this product only as described in this manual. Other uses not recommended may cause fire, electric shock or personal injury. Unplug the game from the outlet when not in use, when moving from one location to another, and before cleaning/servicing.

Explanations which require special attention are indicated by signs of warning. Depending on the potential hazardous degree, the terms: **NOTE**, **NOTICE**, and **WARNING** are used.

NOTE: A NOTE indicates useful hints or information about product usage.

NOTICE: A NOTICE indicates potential damage to product and how to avoid the problem.

WARNING: A WARNING indicates a potential for product damage or serious personal injury.

It is important to understand the meaning of the following **HAZARD SIGNS** before continuing:

High Voltage and Shock Hazard:

High voltage can cause electric shock.
Turn off/unplug power before servicing.



High Temperature Hazard:

This part may cause scalding.
Do not touch. Surface may be hot.



No Touching Hazard:

This part may be hot or can cause electric shock.
Do not touch.



Use the following safety guidelines to help ensure your own personal safety and to help protect your equipment and surrounding environment from potential damage.

 **This product is an indoor game machine. Do not install outdoors.**

Avoid installing in the following places to prevent fire, electric shock, injury and/or machine malfunctioning:

- Places subject to rain/moisture, or places subject to high humidity.
- Places subject to direct sunlight, or places subject to extremely hot or cold temperatures to ensure that it is used within the specified operating range.
- Places where inflammable gas may be present or in the vicinity of highly inflammable/volatile chemicals or items that can easily catch fire
- On unstable or sloped surfaces. The machine may topple or cause unforeseen accidents.
- Vicinity of fire exits, fire extinguishers etc. that may block/prevent safety measures



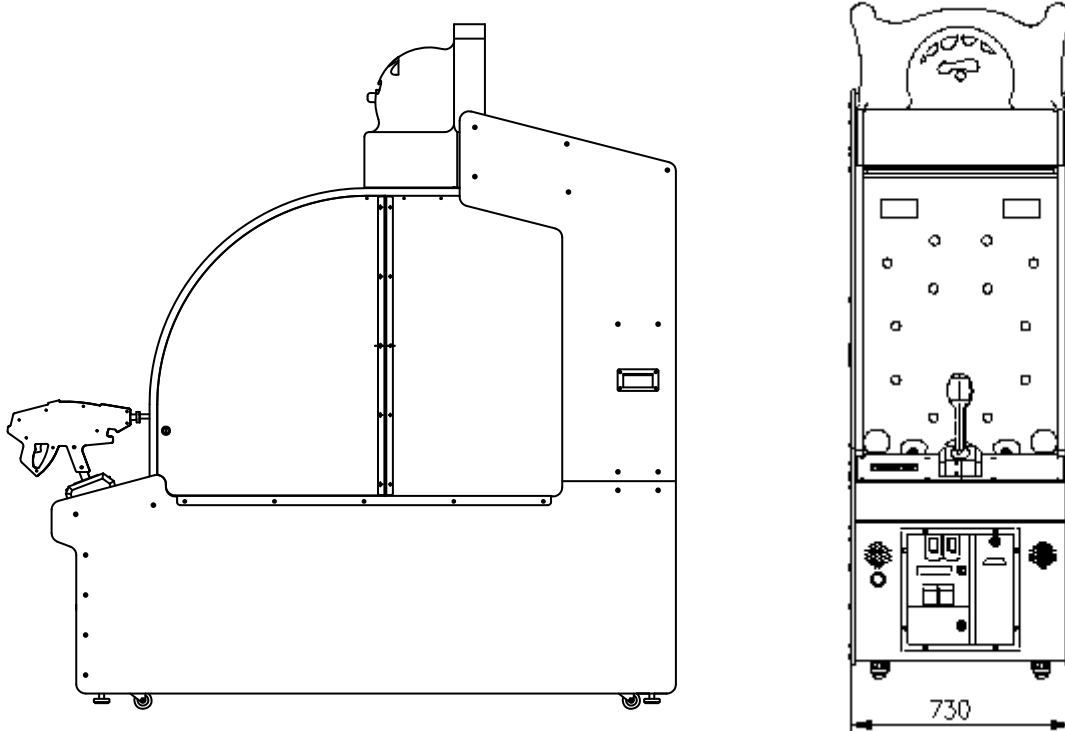
WARNING

Non-technical personnel who do not have technical knowledge or expertise should not attempt to perform the maintenance procedures required to maintain this game. Failing to comply can cause severe accidents such as electric shock or other serious injuries.

WARNING: To reduce the risk of fire, electric shock or personal injury, unplug or disconnect the machine from the power supply before servicing.

Note: The contents of this manual may be updated without notice.

1.SPECIFICATIONS



Rated power supply: AC110V 50/60Hz
 Min. Power consumption: 83W
 Max. Power consumption: 700W
 Dimensions: 348(L) X1020(W) X1020(H) (inch)
 Weight: 606 (lb)


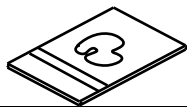


! **NOTICE:** After turning off the game, please wait at least 1 minute before restarting again.

Note: Game parameters are subject to change without notice.

2. PACKAGE CONTENTS

Open the package and make sure all the items are included:

- 1 x Body Assembly
- Following accessories

Item	Part NO.	Name	Specification	Qty	Illustration	Note
1	B108-801-000	Power wire	16AWG 1.8m	1		
2	B108-802-000	Fuse	Φ 5×20mm T10A/250VAC	2		
3	B108-701-000	Manual	ENGLISH	1		
4	B108-401-000	Key	C582	8		
5	B108-402-000	Button Bulb	12V3W	3		
6	B108-403-000	Filter element		1		
7	B108-803-000	Current leakage plug	GF9 15A	1		
8	B108-804-000	Magnetism switch	GPS-30L	2		
			GPS-30R	2		

If any items are found to be missing, please contact your sales representative for help immediately.

NOTE: Part models are subject to change without notice.

3. SET UP & INSTALLATION

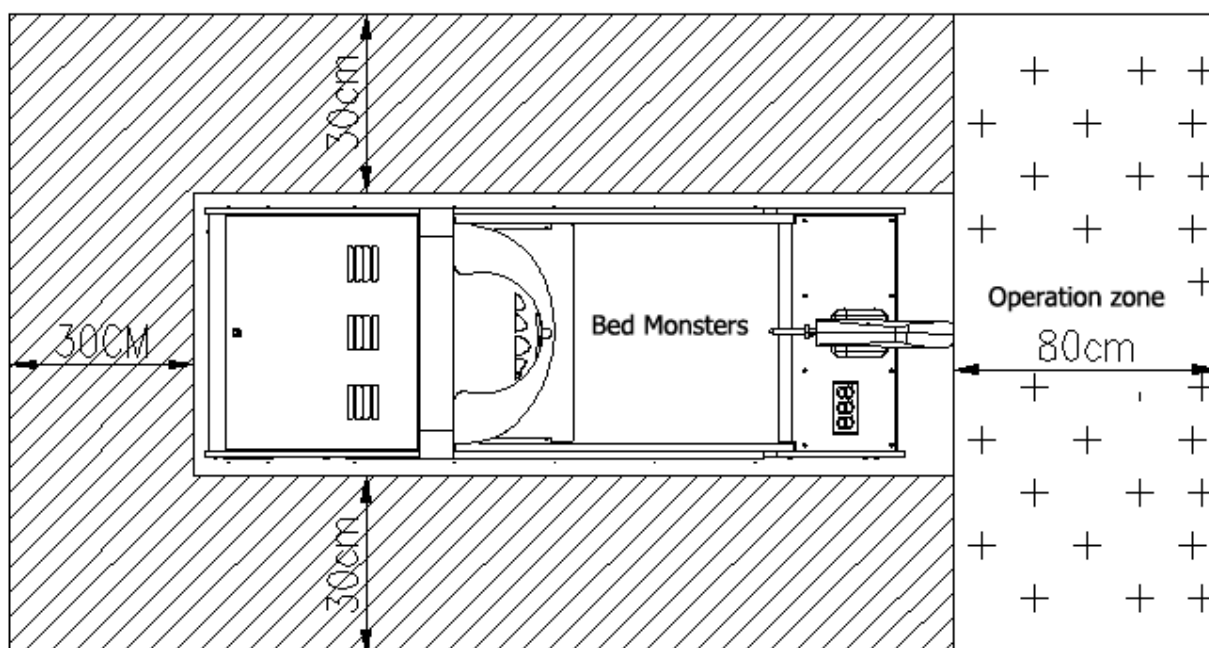
⚠ This product is an indoor game machine. Do not install outdoors.

- Refer to IMPORTANT SAFETY INSTRUCTIONS (Pg. 2) for places to avoid
- Place the unit on a dry level surface
- Ventilation openings in the back of the unit must not be obstructed by objects or by wall.

3.1 Play Zone

This machine requires space for playing and for maintenance as shown below.

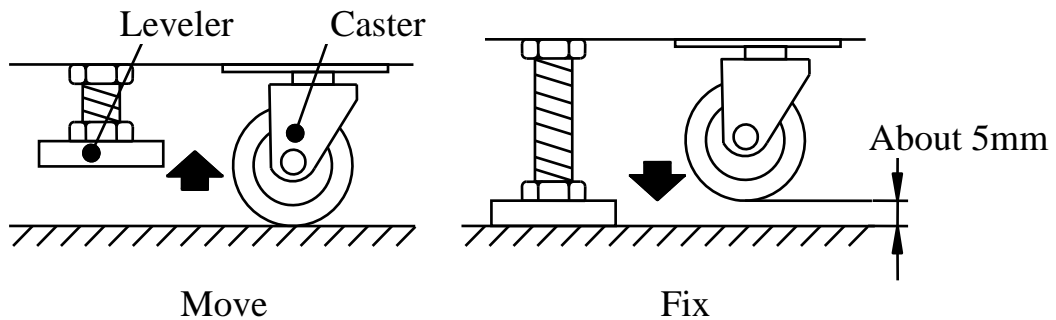
Leave space around the game upon installation:



3.2 Level Adjustment

Install this machine on a flat surface. Adjust levers to lift casters off the ground to level the game. If the game is installed on an unsuitable floor, it could cause a malfunction.

To fix the game, adjust the Leveler down until it touches the floor, lifting the casters off the ground by 5mm. Repeat the same for all levelers.



NOTICE

Make sure the machine is level with the ground and all the adjustable legs should stick to the floor closely.

3.3 Transporting the Game

If you need to move the game, adjust the levelers back to an “up” position so the casters touch the ground.

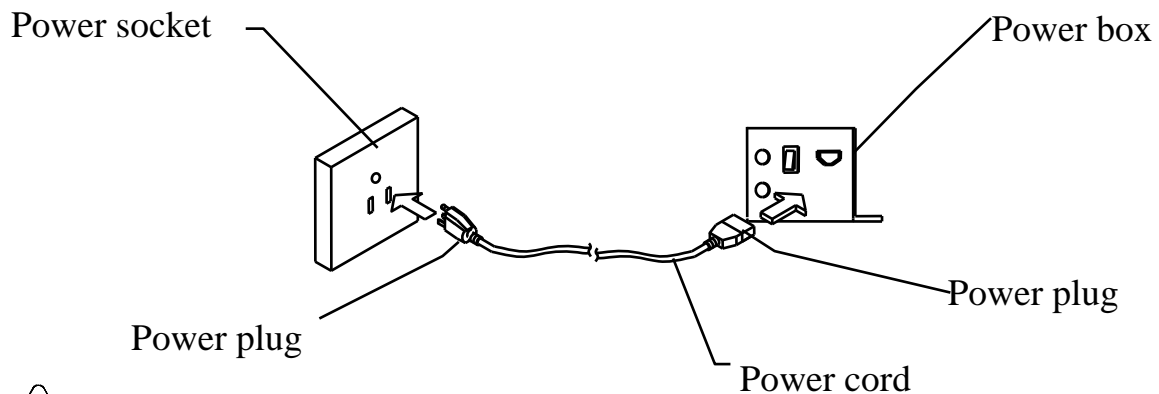
NOTICE

- Be careful not to damage the machine during transport.
- The machine should be handled with care when bringing it down from a higher level.
- Always unplug the game before moving.
- Keep the machine in upright position during transport.
- For longer distance transport, package the game properly to prevent damages

3.4 Connecting Power

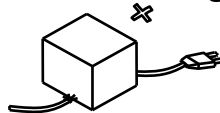
⚠ WARNING: Check the voltage rating before you connect the equipment to an electrical outlet to ensure that the required voltage and frequency match the available power source. Please refer the label of the machine.

- Do not plug the equipment power cables into an electrical outlet if the power cable is damaged.
- Avoid putting many loads on one electrical outlet as it could generate heat and fire resulting from overload.
- Connect the grounding conductor to the earth terminal (GND):

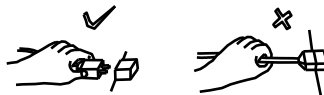


⚠ WARNING

Ensure no heavy objects rest on the power cord. Check to make sure the game cabinet does not sit on the power cord as this could damage the cord and become hazardous.



To disconnect the game, grip the plug and pull it from the wall outlet. Never pull by the cord.



To prevent electric shock, do not touch the power plug when hand is wet.



Ensure that nothing rests on the power cord and that it is not located where it can be stepped on or tripped over.



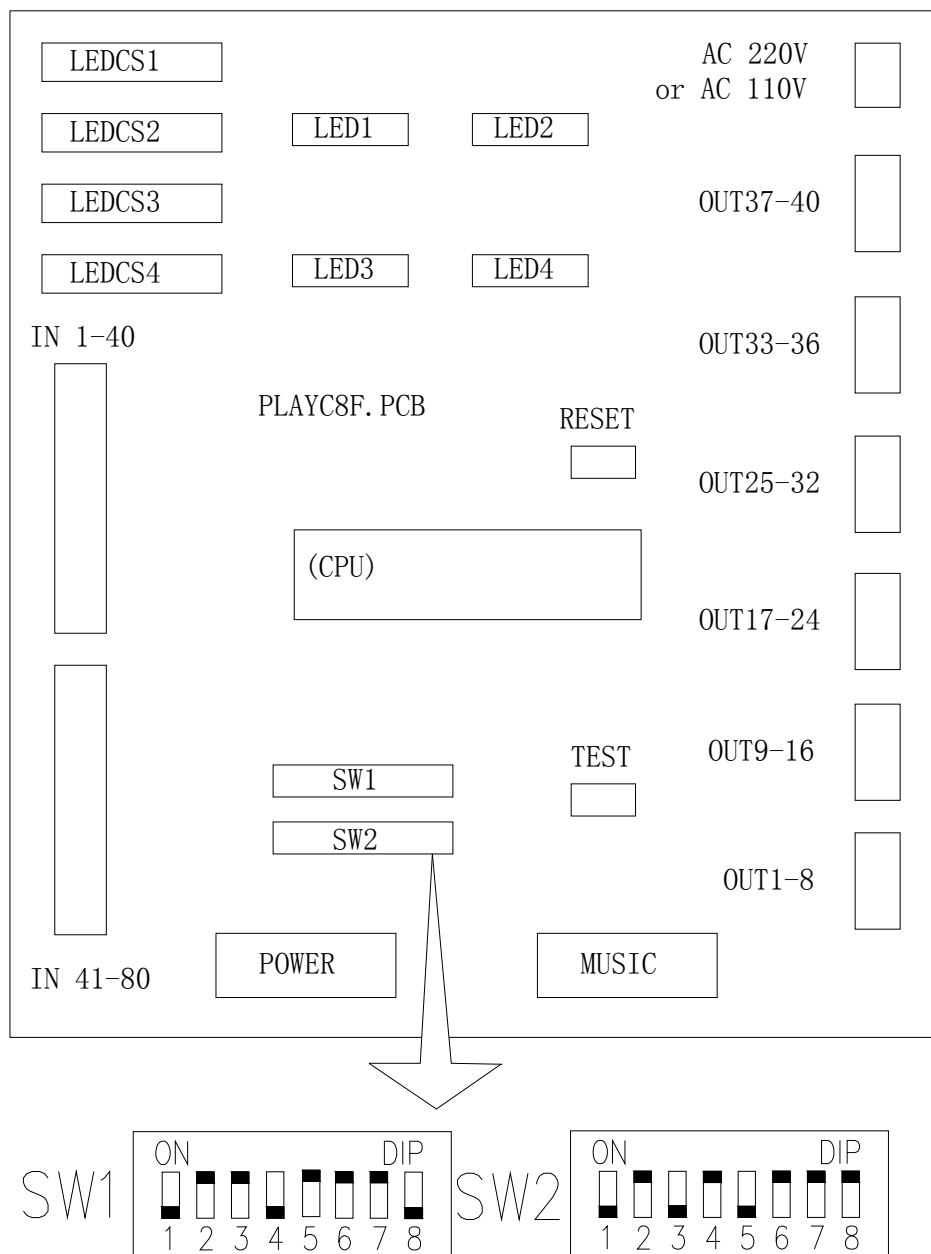
4. HOW TO PLAY

1. Insert coin(s) to start.
2. Within the time limit, use the water gun to shoot targets that are lit up to receive the corresponding points.
3. The 3 monsters at the bottom are worth 50 points each. When all 3 monsters are shot down, the light in the middle of the wheel will start flashing. Successfully shoot the wheel target to double the score!
4. Exceed the highest score displayed to win the BONUS.



5. GAME OPTIONS

1. Refer to the I/O chart, wiring diagram and main board diagram for corresponding INPUT and OUTPUT settings.
2. Adjust DIP settings based on the I/O chart. Words in **CAPITAL** letters are default settings; operators can adjust settings according to location earnings.
3. Main Board plane sketch:



5.1 DIP settings

5.1.1 Insert Coins

Item	Content	DIPSW							
		SW11	SW12	SW13	SW14	SW15	SW16	SW17	SW18
Coin per game	1	ON	ON						
	2	off	on						
	3	on	off						
	4	off	off						

5.1.2 Game Time

Item	Content	DIPSW							
		SW11	SW12	SW13	SW14	SW15	SW16	SW17	SW18
Game time (second)	45			on	on				
	50			OFF	ON				
	60			on	off				
	75			off	off				

5.1.3 Payout(score per ticket)

Item	Content	DIPSW							
		SW11	SW12	SW13	SW14	SW15	SW16	SW17	SW18
Payout (score per ticket)	10					on	on	on	
	25					off	on	on	
	50					on	off	on	
	60					off	off	on	
	75					on	on	off	
	100					off	on	off	
	125					ON	OFF	OFF	
	None					off	off	off	

5.1.4 DEMO Music

Item	Content	DIPSW							
		SW11	SW12	SW13	SW14	SW15	SW16	SW17	SW18
DEMO music	YES								on
	NO								OFF

5.1.5 BONUS Initial Value

Item	Content	DIPSW							
		SW21	SW22	SW23	SW24	SW25	SW26	SW27	SW28
BONUS initial value	10	on	on						
	30	OFF	ON						
	50	on	off						
	100	off	off						

5.1.6 BONUS Increment

Item	Content	DIPSW							
		SW21	SW22	SW23	SW24	SW25	SW26	SW27	SW28
BONUS increment	0			on	on				
	1			off	on				
	1/2			on	off				
	1/3			OFF	OFF				

5.1.7 Mercy Ticket

Item	Content	DIPSW							
		SW21	SW22	SW23	SW24	SW25	SW26	SW27	SW28
Mercy ticket	0					ON	ON		
	1					off	on		
	2					on	off		
	3					off	off		

5.1.8 BONUS Score

Item	Content	DIPSW							
		SW21	SW22	SW23	SW24	SW25	SW26	SW27	SW28
BONUS score	600							on	on
	700							OFF	ON
	800							on	off
	900							off	off

5.1.9 New Jersey Setting

Item	Content	DIPSW							
		SW31	SW32	SW33	SW34	SW35	SW36	SW37	SW38
New Jersey Setting	Yes	on							
	No	OFF							

5.1.10 New Jersey Setting Ticket Payout

Item	Content	DIPSW							
		SW31	SW32	SW33	SW34	SW35	SW36	SW37	SW38
NJ Setting Ticket Payout	3		on	on					
	4		OFF	ON					
	5		on	off					
	6		off	off					

Turntable score parameter:

	1	2	3	4	5	6	7	8
	10	5	20	5	30	10	5	50

Turntable SWs rank clockwise.

6. MAINTENANCE & INSPECTION

6.1 Safety Check

Check the points listed before operating the machine. These checks are necessary for safe machine operation:

1. Try to run the game before operation each day.
2. Conduct monthly routine checks of game components ensure good working condition
3. Check the machine regularly for dust and clean when necessary.

Note: Parts and components require preventative maintenance to be kept running smoothly

6.2 Handling Precautions

When installing or inspecting the machine, be very careful of the following points and pay attention to ensure that the player can enjoy the game safely.

Non-compliance with the following points or inappropriate handling running counter to the cautionary matters herein stated can cause personal injury or damage to the machine



WARNING

- Before servicing the machine, be sure to turn power off. Servicing without turning the power off can cause electric shock or short circuit.
 - To avoid electric shock or short circuit, do not plug then unplug the power quickly
 - Do not expose power cords and earth wires, these are susceptible to damage.
 - Damaged cords and wires can cause electric shock or short circuit and should be replaced immediately.
 - When or after installing the product, avoid pulling the power cord to prevent unnecessary wear and tear. Use the power button to disconnect power.
 - In case the power cord is damaged, ask for replacement through where the product was purchased from or replace locally. Continued usage of damaged cord can cause fire, electric shock or leakage.
 - Perform grounding appropriately. Inappropriate grounding can cause electric shock.
 - Use fuses that meet specified rating. Fuses that exceed the specified rating may cause electrical problems or even shock.
-
- Should a problem occur, turn off the power immediately and stop operating the machine. Unplug the power cord of the service outlet. Operating the machine without correcting the problem may cause a fire or injuries.
 - Insert the power plug securely into the outlet. Poor contact may cause overheating, resulting in fire or burns.
 - To ensure the warning labels attached on the machine are visible and legible, install the machine in a well-lit location, and keep the labels clean at all times. Make sure the labels are not hidden behind other game machines.

7. OVERALL CONSTRUCTION

Front view:



Rear view:

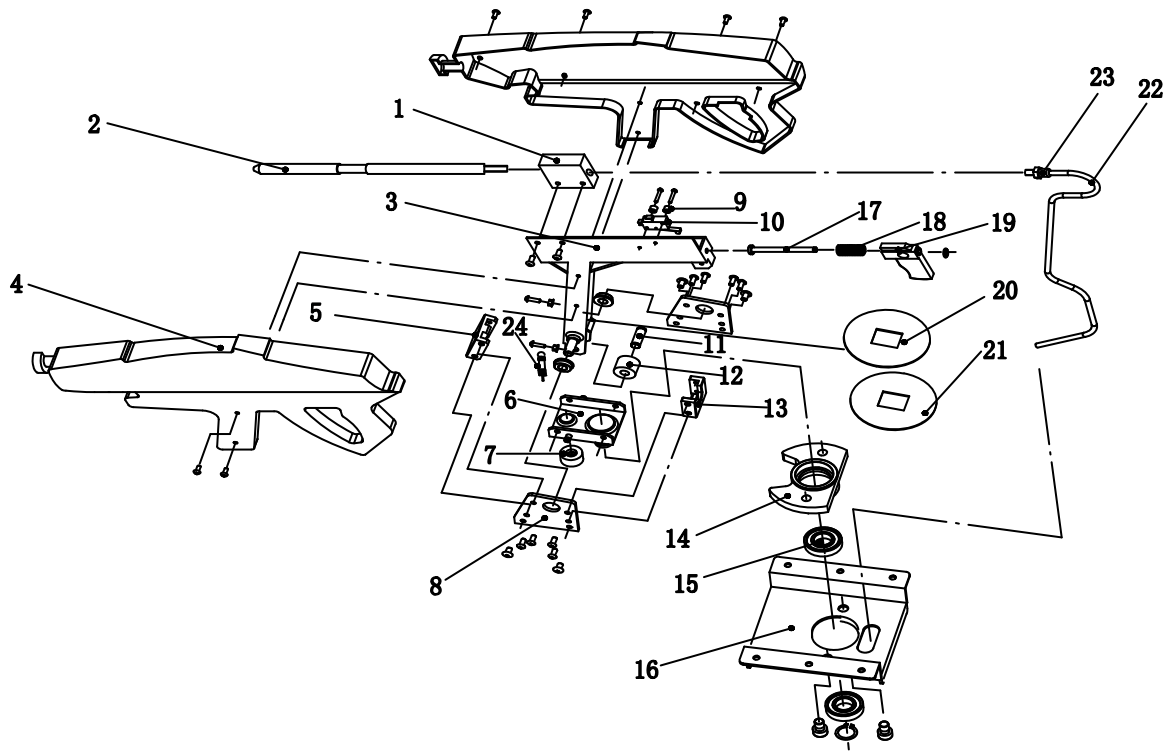


7-1. Main Construction



NO.	Part NO.	Content	Qty	SPEC.	Note
1	B108-601-000	Top fiberglass	1	Fiberglass	
2	B108-805-000	Spot lights	3	MR11-12V-1W/white	
3	B108-602-000	Plexi C	1	Transparent plexi	
4	B108-101-000	Frame B	1	Mirror stainless steel	
5	B108-001-000	Water gun assembly	1	Assembly	
6	B108-806-000	1.5" LED display	1	LED15B3.PCB	
7	B108-807-000	2.3" LED display	1	LED23B3.PCB	
8	B108-808-000	Speaker	2	4" 8ohms 10W	
9	B108-809-000	LED top lights	2	MR16-DC12V	
10	B108-603-000	Top plexi	1	PC	
11	B108-604-000	Plexi A	1	Transparent plexi	
12	B108-404-000	Hinge	1	Stainless steel	
13	B108-605-000	Plexi B	1	Transparent plexi	
14	B108-102-000	Frame A	1	Mirror stainless steel	

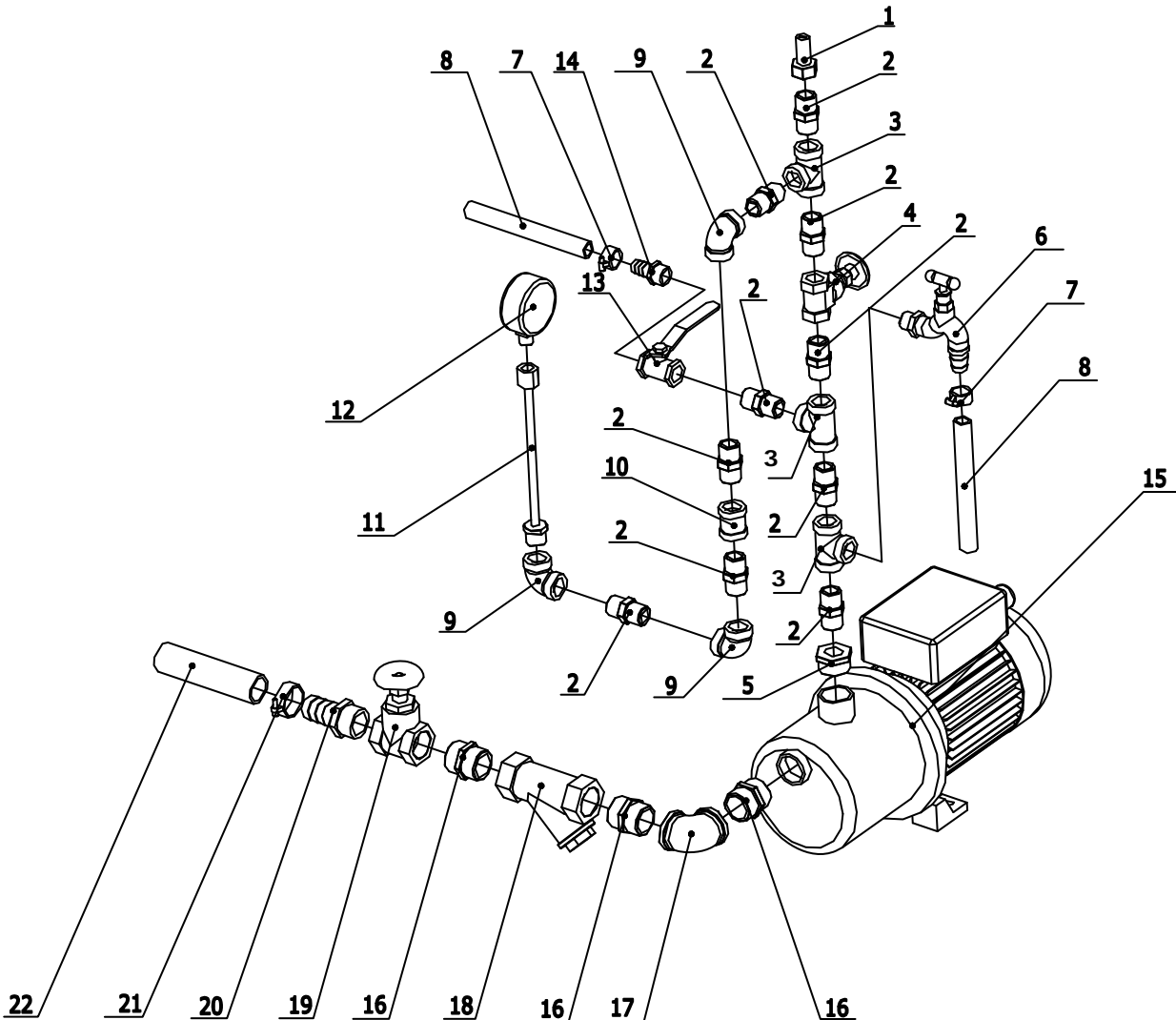
7-2. Water Gun Assembly



NO.	Part NO.	Content	Qty	SPEC.	Note
1	B108-103-000	Nozzle Support	1	Aluminum alloy	
2	B108-104-000	Nozzle	1	Brass	
3	B108-105-000	Gun body	1	Q235	
4	B108-606-000	Shell	2	Fiber glass	
5	B108-106-000	Locating plate	1	Q235	
6	B108-405-000	Swing bearing	1	Stainless steel	
7	B108-607-000	Bumper B	1	Polyurethane	
8	B108-107-000	Side plate	2	Q235	
9	B108-608-000	Electrical plastic	1	White nylon	
10	B108-832-000	Micro SW	1	28mm	
11	B108-108-000	Anti-collision Axis	1	Stainless steel	
12	B108-609-000	Bumper A	1	Polyurethane	
13	B108-109-000	Locating plate A	1	Q235	
14	B108-406-000	Flange bearing	2	Φ 10X Φ 19X7	
15	B108-407-000	Bearing	2	Φ 20X Φ 42X12	
16	B108-110-000	Base	1	Stainless steel	
17	B108-111-000	Nail tensile	1	Stainless steel	
18	B108-112-000	Fixing screw compression spring	1	65SiMn	
19	B108-113-000	Trigger	1	Black nylon	
20	B108-114-000	Shield A	2	Black PP	

21	B108-115-000	Shield B	1	Crystal PC	
22	B108-408-000	PU air pipe	1	Black	
23	B108-409-000	Straight connector	1	Copper	
24	B108-116-000	Fixing screw extension spring	2	65SiMn	

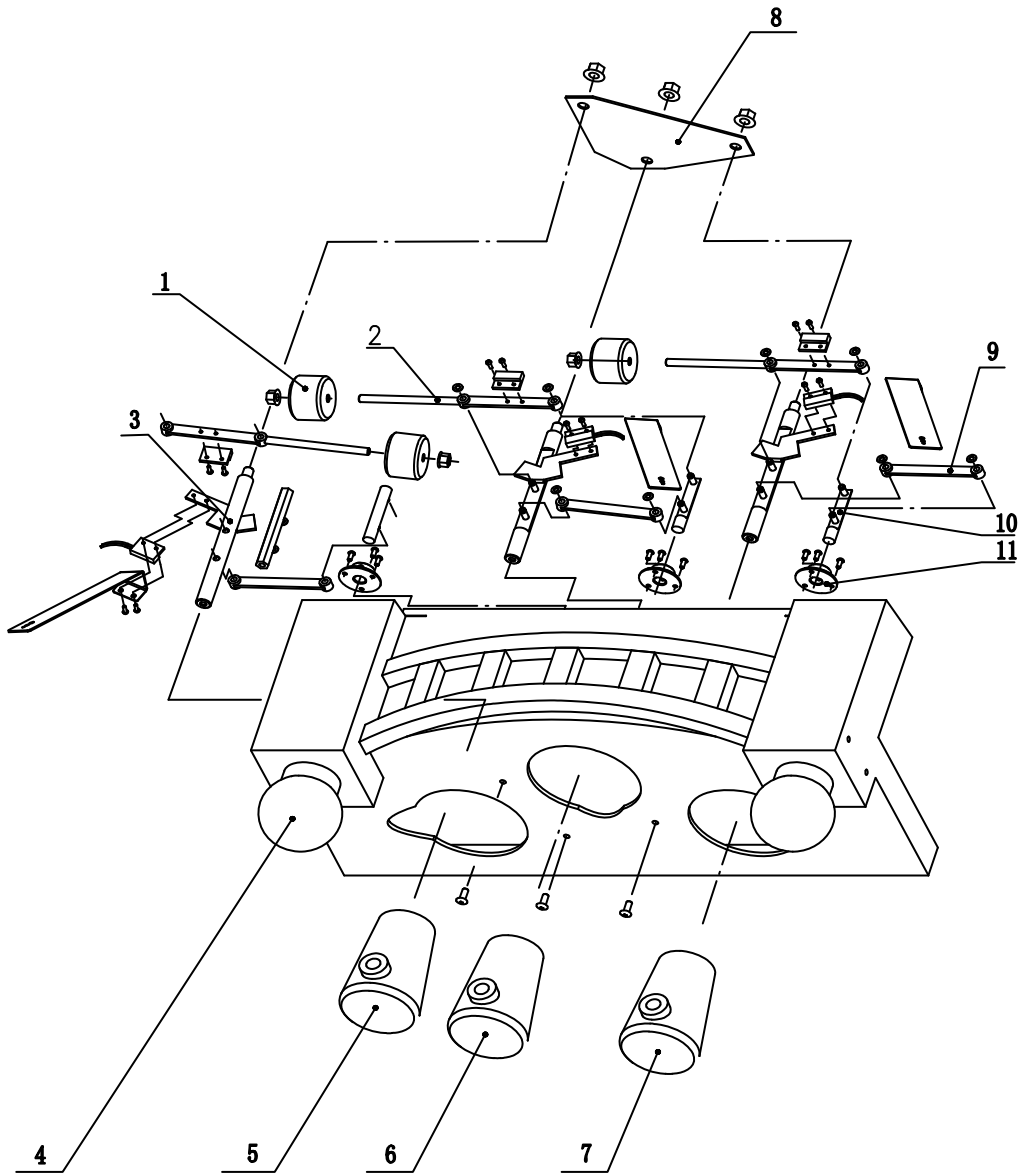
7-3. Pump Assembly



NO	Part NO.	Content	Qty	SPEC.	Note
1	B108-117-000	Mesh hose	1	Stainless steel 1/2" 200mm	
2	B108-118-000	Connector	10	Stainless steel 1/2"	
3	B108-119-000	Tee joint	3	Stainless steel 1/2"	
4	B108-410-000	Gate valve	1	1/2"	
5	B108-411-000	Male and female screw	1	Copper DN25*15 1*1/2	
6	B108-412-000	Water faucet	1	DN15 1/2"	
7	B108-413-000	Hose clamps	2	15-25mm	
8	B108-414-000	Water hose	1	DN15 1/2" 13*18mm	
9	B108-415-000	90° bend pipe	3	Stainless steel DN15 1/2"	
10	B108-416-000	Straight thread connector	1	Stainless steel 1/2"	

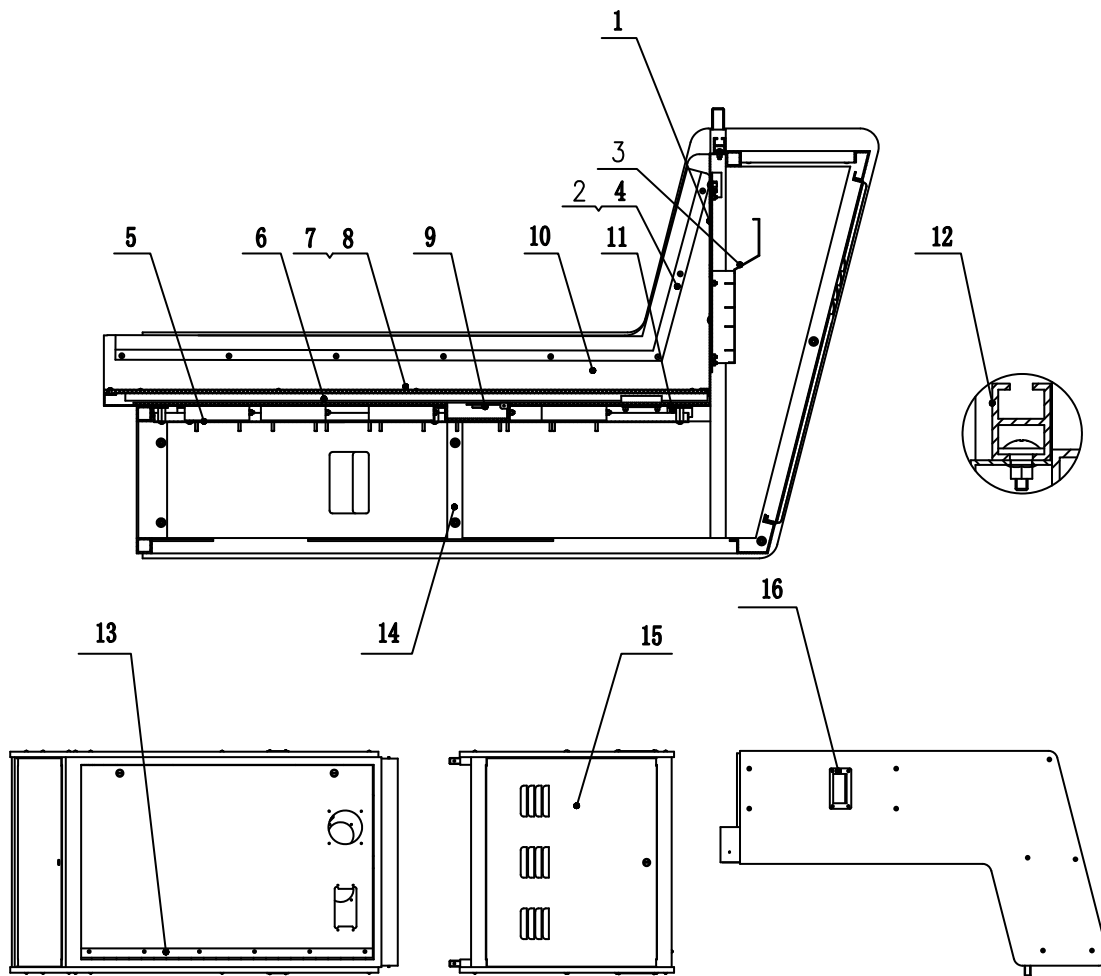
11	B108-417-000	Pressure gauge bend	1	DN15*10 1/2*3/8	
12	B108-418-000	Pressure gauge	1	Y-60	
13	B108-419-000	Brass ball valve	1	DN15 104 1/2"	
14	B108-420-000	Male air tap	1	Copper DN15 1/2"	
15	B108-421-000	Jet self-suction pump	1	BJZ037	
16	B108-422-000	Connector	3	Stainless steel DN25 1"	
17	B108-423-000	90° bend pipe	1	Brass DN25 1"	
18	B108-424-000	Filter tap	1	DN25 1"	
19	B108-425-000	Brass ball valve	1	DN15 205 1"	
20	B108-426-000	Male air tap	3	Copper DN25 1"	
21	B108-427-000	Hose clamps	4	21-38mm	
22	B108-428-000	Water hose	1	DN25 1" 25*31mm	

7-4. Character Assembly



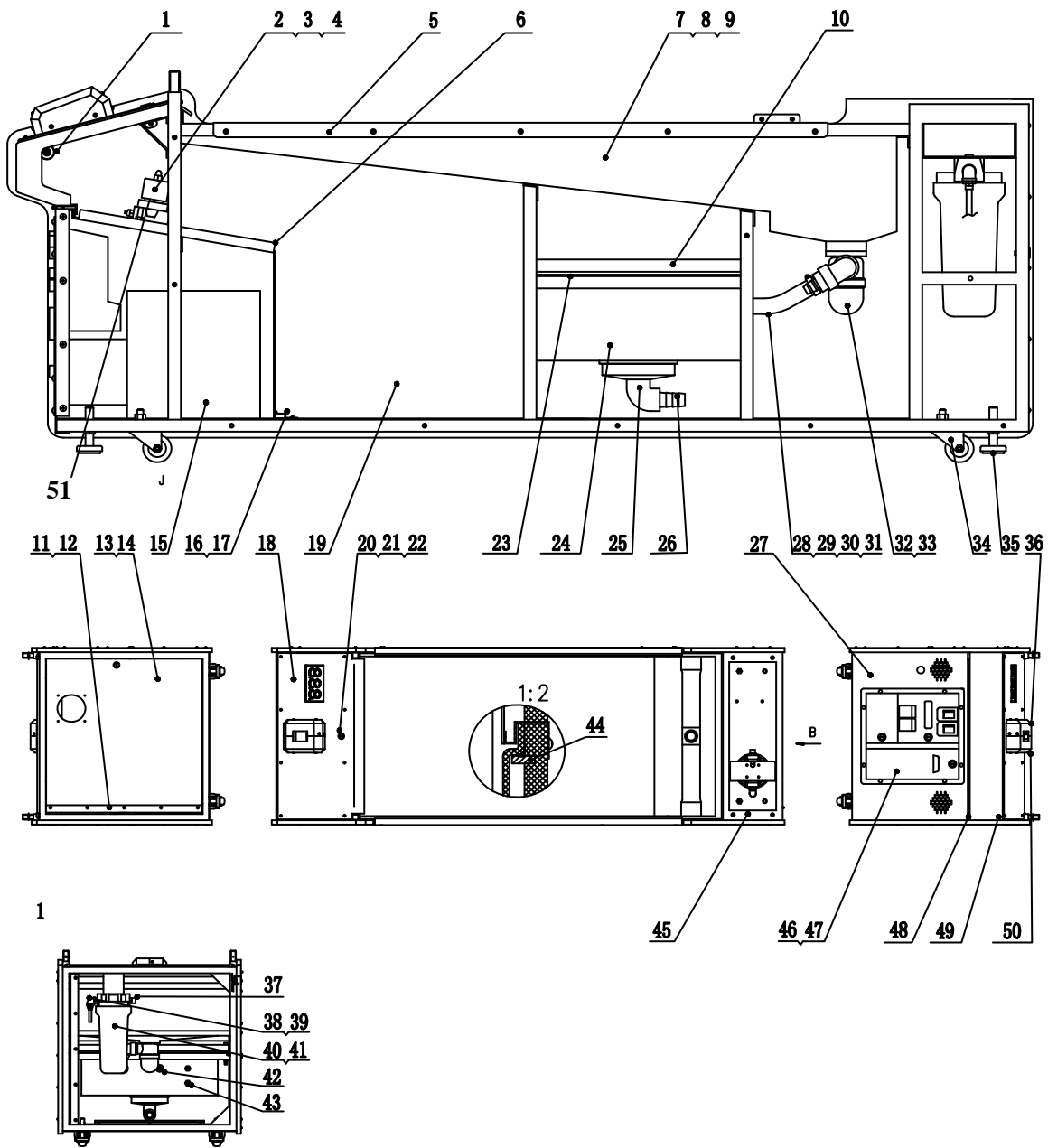
NO.	Part NO.	Content	Qty	SPEC.	Note
1	B108-120-000	Counter weight	3	Brass	
2	B108-121-000	Connecting rod A	3	Stainless steel	
3	B108-122-000	Character support	3	Stainless steel	
4	B108-610-000	Fiber glass	1	Fiber glass	
5	B108-611-000	Character A	1	Vinyl	
6	B108-612-000	Character B	1	Vinyl	
7	B108-613-000	Character C	1	Vinyl	
8	B108-123-000	Connector panel	1	Stainless steel	
9	B108-124-000	Connecting rod B	1	Stainless steel	
10	B108-125-000	Character holder	3	Stainless steel	
11	B108-126-000	Shaft housing	3	Stainless steel	

7-5. Main Cabinet Assembly A



NO.	Part NO.	Content	Qty	SPEC.	Note
1	B108-614-000	Marquee panel	1	Transparent plexi	
2	B108-127-000	End molding	2	Stainless steel	
3	B108-128-000	LED support	1	Q235	
4	B108-129-000	Rivets steel	16	Stainless steel	
5	B108-130-000	LED support(Back)	1	Q235	
6	B108-615-000	Plastic panel	1	Transparent PC	
7	B108-616-000	Playfield graphic	1	Transparent plexi	
8	B108-131-000	Channel steel	2	Stainless steel	
9	B108-132-000	Stainless steel sheet	12	Stainless steel	
10	B108-133-000	Stainless steel frame C	1	Stainless steel	
11	B108-134-000	Pillar Support A	7	Copper stick	
12	B108-135-000	Plexi holder B	1	Aluminum	
13	B108-136-000	Door check A	1	Stainless steel	
14	B108-137-000	Iron frame A	1	Q235	
15	B108-138-000	Top cover	1	Q235	
16	B108-429-000	Handle	2	Black plastic	

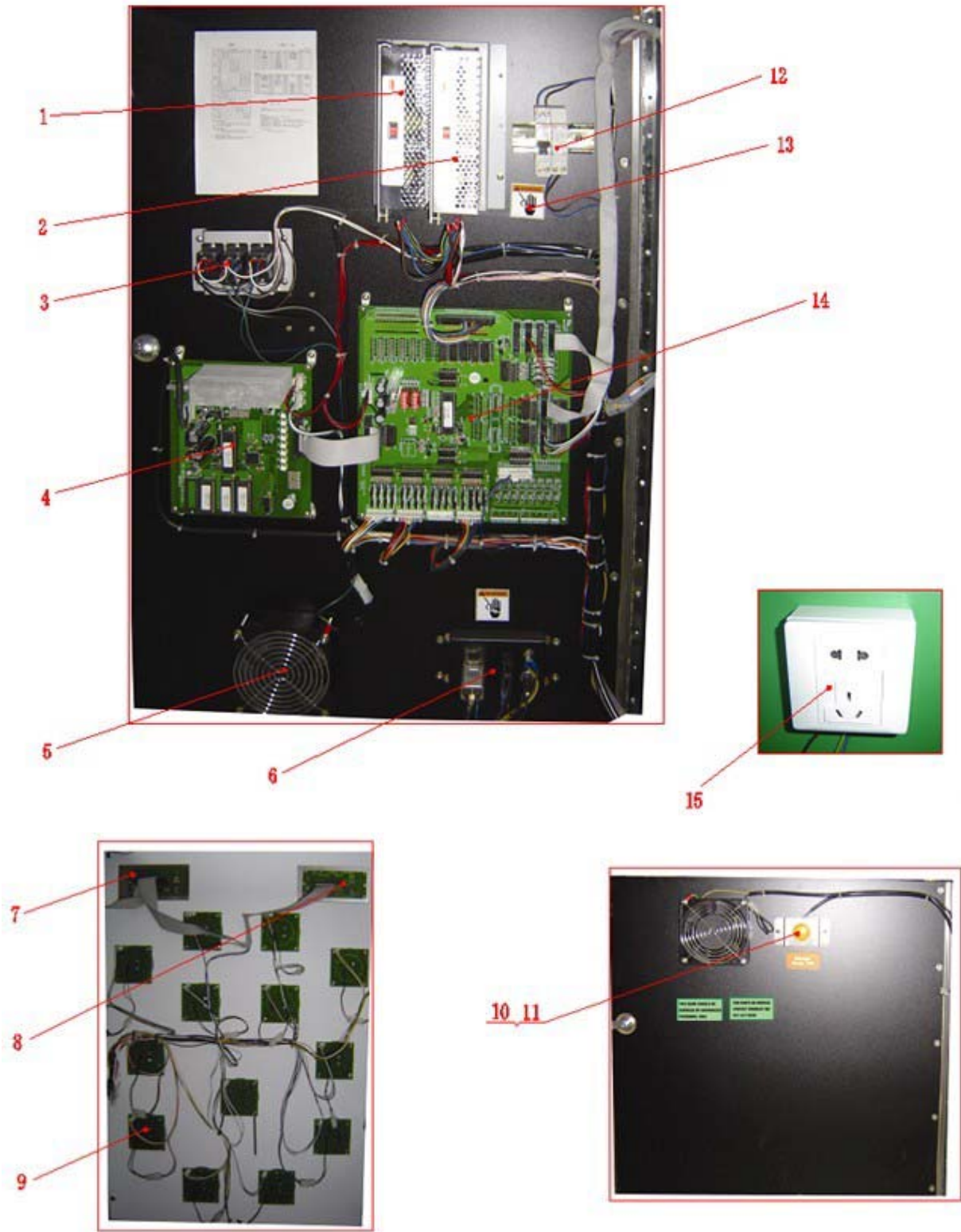
7-6. Main Cabinet Assembly B

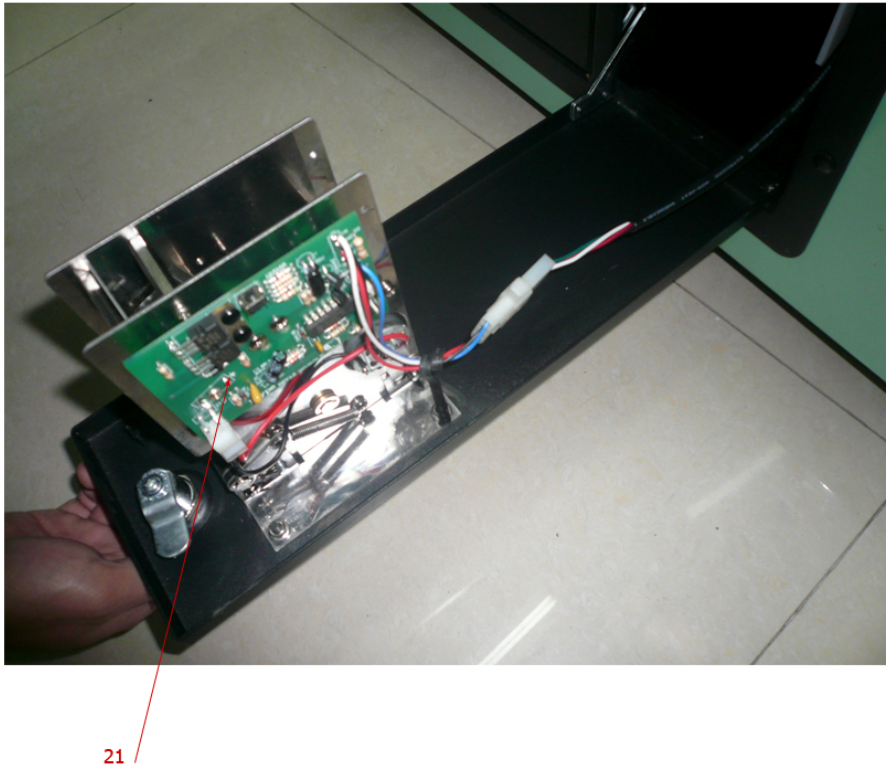
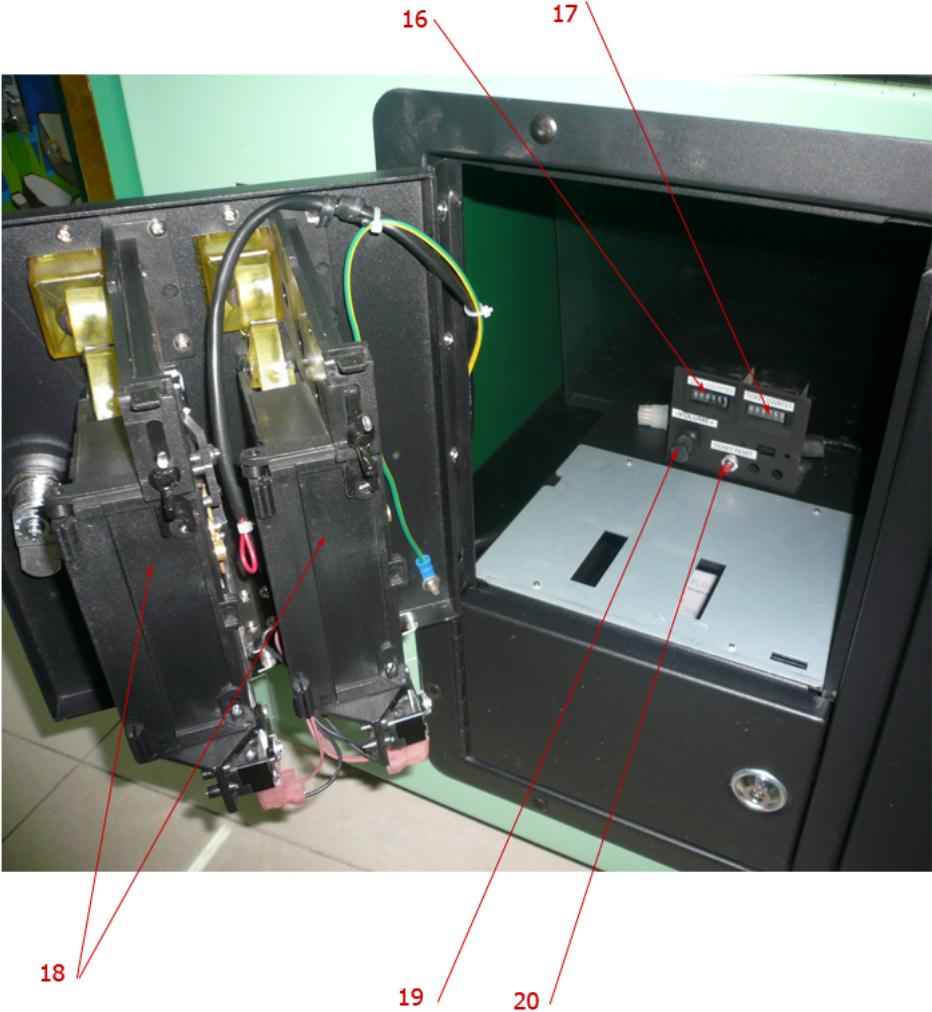


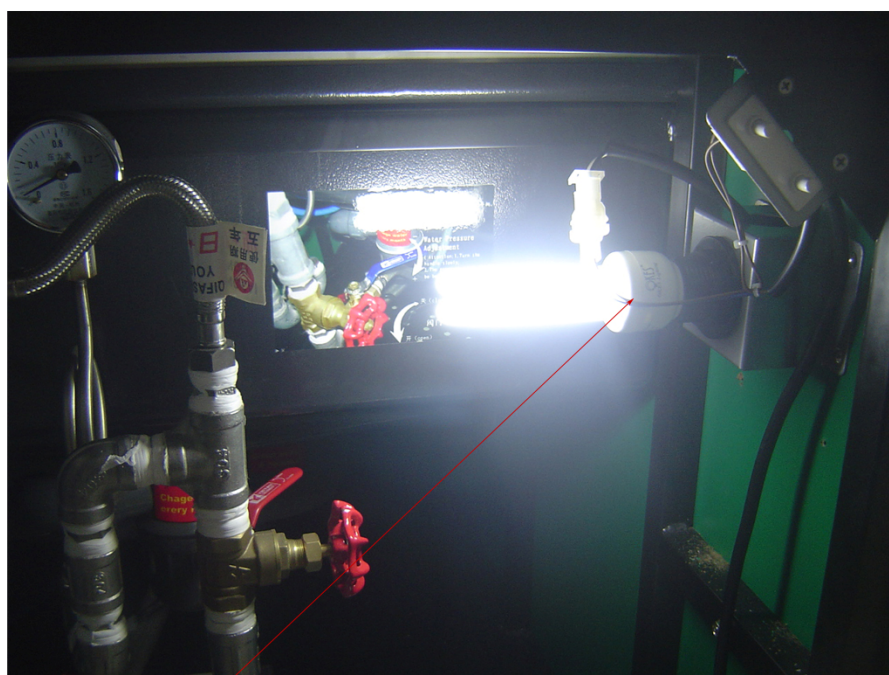
NO.	Part NO.	Content	Qty	SPEC.	Note
1	B108-139-000	Flange	1	Brass stick	
2	B108-140-000	Pillar support B	2	Copper stick	
3	B108-430-000	Straight connector	2	Copper JK-1/2X Φ 12	
4	B108-431-000	Straight connector	1	Copper JK-1/2X Φ 12	
5	B108-141-000	Slot	2	Mirror stainless steel	
6	B108-617-000	Water baffle	1	Crystal PC	
7	B108-618-000	Flume	1	Black ABS	
8	B108-432-000	Copper core	1	Copper	
9	B108-433-000	Siphon	1		
10	B108-142-000	Tank fixer	1	Q235	
11	B108-143-000	Door check B	1	Stainless steel	
12	B108-434-000	Rivets steel	12	Stainless steel	
13	B108-501-000	Back door(bottom)	1		
14	B108-435-000	Lock	4	171	
15	B108-436-000	Ticket box	1		
16	B108-144-000	Water baffle plate	1	Stainless steel	
17	B108-437-000	Rivets steel	8	Stainless steel	
18	B108-618-000	Control panel	1	Crystal PC	
19	B108-502-000	Side cabinet B	2		
20	B108-145-000	Lock plate	1	Stainless steel	
21	B108-146-000	Lock pin	2	Stainless steel stick	
22	B108-147-000	Pin	2	Φ 1.2	
23	B108-619-000	Tank lid	1	Crystal PC	
24	B108-148-000	Tank	1	Stainless steel	
25	B108-149-000	Waterspout	1	Stainless steel	
26	B108-438-000	Male air valve	1	Copper	
27	B108-150-000	Front door	1	Q235	
28	B108-439-000	Siphon	1	Copper	
29	B108-151-000	Tight circle	2	Stainless steel	
30	B108-440-000	Water pipe	1	Nylon braided tube	
31	B108-152-000	Converter	1	Brass	
32	B108-153-000	Filter screen	1	Stainless steel	
33	B108-441-000	Drainer	1	Charcoal grey plastic	
34	B108-442-000	Caster	4	2.5"	
35	B108-154-000	Support	4		
36	B108-155-000	Lid(Right)	1	Q235	
37	B108-156-000	1/2Copper connector	1	Copper	
38	B108-443-000	1/2Copper siphon	1	Copper	
39	B108-444-000	PU air valve	1	Blue	
40	B108-445-000	Water processor	1	Blue plastic	
41	B108-446-000	Water processor filter	1	Regenerated polyester staple fiber	
42	B108-447-000	Gas nozzle	1	Copper	
43	B108-448-000	Water line SW	2	Black plastic	

44	B108-157-000	Block	2	Aluminum	
45	B108-158-000	Main Frame B	1	Q235	
46	B108-449-000	Coin door	1		
47	B108-450-000	Lock	1	2222	
48	B108-159-000	Hinge	1	Q235	
49	B108-160-000	Control panel	1	Q235	
50	B108-161-000	Lid(Left)	2	Q235	
51	B108-454-000	Solenoid	1	1/2×DC24V(Taiwan)	

7-7. Electrical Components







22

NO.	Part NO.	Content	Qty	SPEC.	Note
1	B108-810-000	Power supply	1	S150-24 (24V 6.5A)	
2	B108-811-000	Power supply	1	S150-12 (12V 12.5A)	
3	B108-812-000	Relay	2	T9AP5D52-12	
4	B108-813-000	Music PCB	1	SY-MUSIC01 PCB	
5	B108-814-000	Fan	2	4" 110V	
6	B108-815-000	Cable box components	1		
7	B108-816-000	Score display PCB	1	LED 18B3	
8	B108-817-000	Time display PCB	1	LED 18B3	
9	B108-818-000	LED lights PCB	13	LED 18.PCB	
10	B108-819-000	30# button	1		
11	B108-820-000	Button lamp	1	12V3W	
12	B108-821-000	leakage circuit-breaker	1	110V20A	
13	B108-822-000	High voltage warning	2		
14	B108-823-000	Main board	1	PLAYC8F.PCB	
15	B108-824-000	Socket	1	TCL	
16	B108-825-000	Coin counter	1	C-012 DC12V	
17	B108-826-000	Ticket counter	1	C-012 DC12V	
18	B108-827-000	Coin mech	2		
19	B108-828-000	Volume knob	1	Black	
20	B108-829-000	Test reset button	1	PB:11C02R red	
21	B108-830-000	Ticket mech	1	CL-022Q-270	
22	B108-831-000	Energy-saving lamp	2	E27 110V/13W	

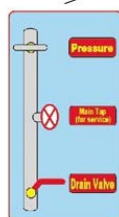
7-8. Decals



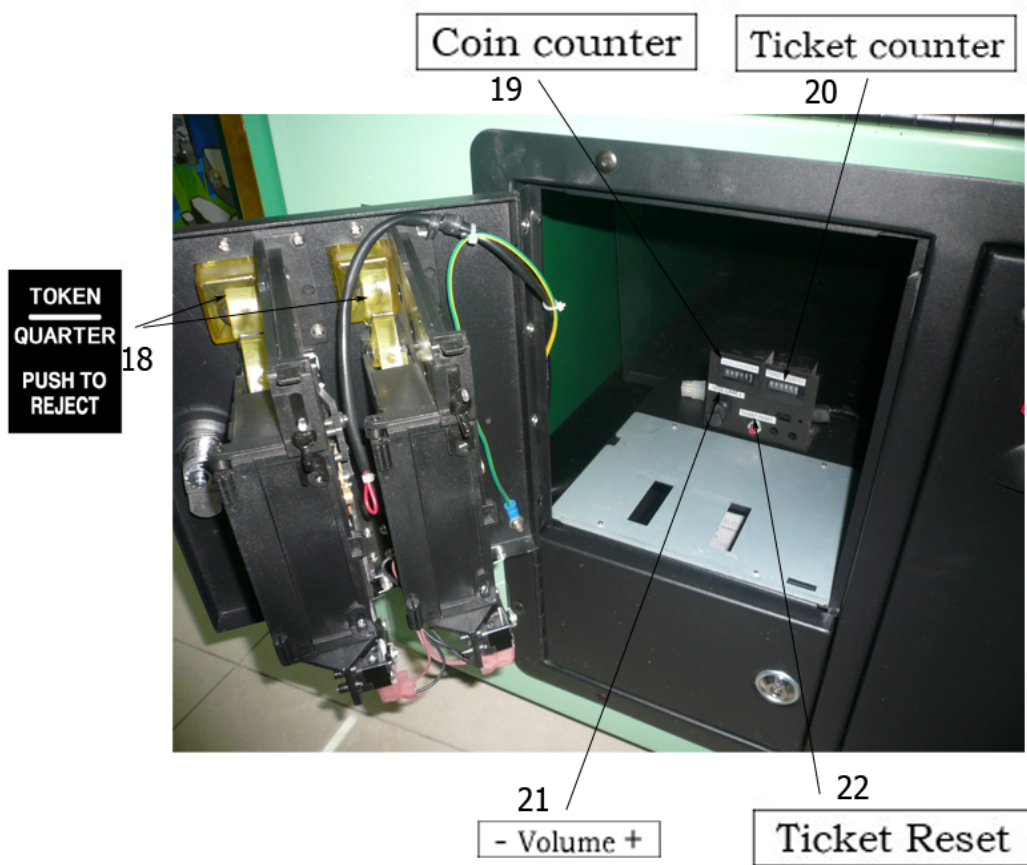
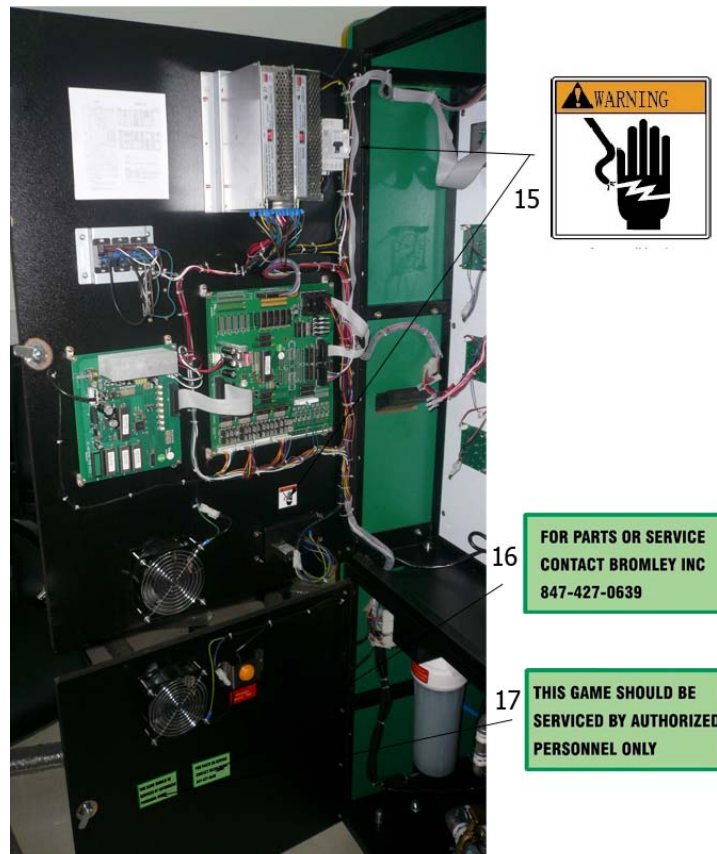
Clean once a month & change every 6 months.

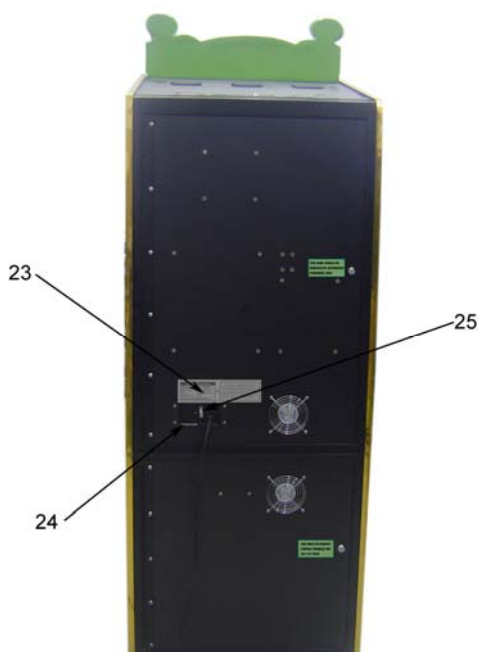
Change water every month

Clean every 6 months



14





NO.	Part NO.	Content	Qty	SPEC.	Note
1	B108-702-000	Main decal	1	3mm plexi	
2	B108-703-000	Play area decal	1	0.3mm reversed screening PVC	
3	B108-704-000	Control panel decal	1	5mm PC	
4	B108-705-000	Side-bottom decal	2	0.3mm reversed screening PVC	
5	B108-706-000	Side-top decal	2	0.3mm reversed screening PVC	
6	B108-707-000	Character score decal	3	2mm reversed PVC	
7	B108-708-000	Add water decal	1	0.3mm reversed screening PVC	
8	B108-709-000	Notice decal	1	0.3mm reversed screening PVC	
9	B108-710-000	Tickets decal	1	PVC100u non-setting adhesive	
10	B108-711-000	UNIS decal	2	0.3mm reversed screening PVC	
11	B108-712-000	Notice 1	1	0.3mm reversed screening PVC	
12	B108-713-000	Notice 2	1	0.3mm reversed screening PVC	
13	B108-714-000	Notice 3	1	0.3mm reversed screening PVC	
14	B108-715-000	Drainage instruction	2	0.3mm reversed screening PVC	
15	B108-716-000	Warning decal	2	PVC100u non-setting adhesive	
16	B108-717-000	Service decal	1	PVC100u non-setting adhesive	
17	B108-718-000	Service information decal	1	PVC100u non-setting adhesive	
18	B108-719-000	Coin entry decal	2	PVC100u non-setting adhesive	
19	B108-720-000	Coin counter decal	1	PVC100u non-setting adhesive	
20	B108-721-000	Ticket counter decal	1	PVC100u non-setting adhesive	
21	B108-722-000	Volume decal	1	PVC100u non-setting adhesive	
22	B108-723-000	Ticket reset decal	1	PVC100u non-setting adhesive	
23	B108-724-000	UL approved nameplate	1	δ 0.5 aluminum plate	
24	B108-725-000	Fuse spec decal	1	PVC100u non-setting adhesive	
25	B108-726-000	ON/OFF decal	1	PVC100u non-setting adhesive	

8. TROUBLESHOOTING

8-1 Trouble Shooting

Problem	Potential Cause	Solution
The game is not turning on	Power is not ON, or power cord is not plugged in properly	Turn on the power button or replace with specified power cord.
	The fuse is blown.	Replace with specified rating fuse.
	Error codes displayed	Please refer to ERROR CODES table below.
There is no sound	Incorrect Sound volume settings.	Adjust the volume.
	Faulty connections for various connectors.	Check the connectors for speakers and volume.
	Faulty speakers	Replace with new speakers.
The "Add Water" button light stays on	Not enough water in the machine.	Add water until the button light is OFF (about 10L of water needed).
Water gun is not shooting water while game is in play	Not enough water in the machine	Add water until the button light is OFF (about 10L of water needed).
	Filter is jammed.	Clean the filter first. If necessary, replace with a new filter.
	Insufficient water pressure	Adjust the water pressure located in the back of the machine.
Power shuts OFF while the game is playing.	Short circuit due to electric leakage.	Check the electric leakage and restart the machine.
Lights are not on	Burnt light bulbs	Replace with new light bulbs.

8-2 Error Codes

Error Code	Potential cause	Solution
E01,E02	Coin jammed	Take out the jammed coin.
	Faulty coin mech.	Replace new coin mech.
E03	Faulty ticket reset button	Replace with proper ticket reset button.
	Ticket reset button is stuck.	Replace with proper ticket reset button.
E06	Water gun assembly micro SW is faulty	Replace with proper micro SW.
	Water gun trigger is stuck	Release the water gun trigger.
E10-24	Faulty corresponding magnetic SW.	Replace with new magnetic SW.

Note: Error codes will be displayed on SCORE LED display on the play area panel.

Additional pages

1. Additional parts:



4



NO.	Part NO.	Content	Qty	SPEC.	Note
1	B108-451-000	Light bulb cover	2	Transparent PVC	
2	B108-452-000	Hinge supporting plate	1	Aluminum	
3	B108-453-000	Screw caps	20	Stainless steel	
4	B108-718-000	Service information decal	2	PVC100u non-setting adhesive	

2. Steps of adjusting the weights of 3 characters:

2-1. Take out the plexis on both sides by removing all the screws around them.



2-2. Take out the stainless sheet on both sides.



2-3. Remove the black silicon on both corners and take out the fiberglass with 3 characters.

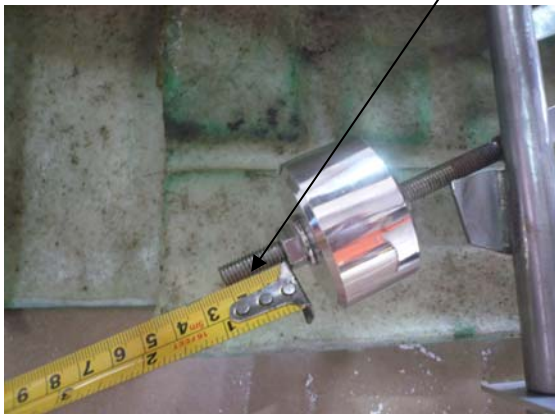


2-4. Screw the 3 counterweights in or out to adjust the weight of 3 characters.



Screw it in will make it easier for the characters to drop.
Screw it out will make it harder for the characters to drop.

2-5. Screw the counterweight in by 20mm is our default setting.



For Parts and Service, call Bromley-Inc.

www.bromley-inc.com

Tel: 847-427-0639